



ANNUAL
REPORT
2011-2012

WWEIL CONNIE



CONTENTS

2	ABOUT US
4	MESSAGE FROM OUR CHAIRMAN
6	MESSAGE FROM OUR CHIEF EXECUTIVE
8	MESSAGE FROM SCH NETWORK CHIEF EXECUTIVE
12	MYLES' STORY
14	ORGANISATION & OPERATIONS
16	OUR BOARD MEMBERS
20	SCHF BOARD
22	OUR LEADERSHIP TEAM
26	ALYSSA'S STORY
28	OUR PEOPLE
30	OUR VOLUNTEERS
32	SID'S STORY
34	SUSTAINABILITY
36	BUSINESS STRATEGY
40	YUTA'S STORY
42	FUNDING HIGHLIGHTS
44	MEDIA & COMMUNICATION
46	CHFA
48	MEET SUNNY
50	ELIZABETH'S STORY
52	GOLD WEEK TELETHON
54	ART PROGRAM
56	NEW CLINICAL SERVICES WING
58	SNAPSHOT
62	JARVIS' STORY
64	HOW YOUR SUPPORT HELPED
74	OUR FELLOWSHIP PROGRAM
76	OUR YEAR AT A GLANCE
78	HALL OF CHAMPIONS
80	OUR PARTNERS
84	SUNSHINE GUARDIANS
86	MANY THANKS
94	INDEPENDENT AUDITOR'S REPORT
95	COMMENTARY ON FINANCIAL PERFORMANCE
96	FINANCIAL STATEMENTS
102	THANK YOU JIMMY POZARIK



OUR CORE PURPOSE IS TO PROVIDE SIGNIFICANT FINANCIAL ASSISTANCE FOR THE SUPPORT OF EQUIPMENT, RESEARCH AND CLINICAL SERVICES AT SYDNEY CHILDREN'S HOSPITAL, RANDWICK.



ABOUT US



INTEGRITY
HONESTY
RESPECT
QUALITY
RESPONSIBILITY



OUR VISION IS TO BE WORLD-CLASS IN OUR OPERATIONS AND A CATALYST TO INSPIRING BETTER OUTCOMES FOR CRITICALLY ILL AND INJURED CHILDREN.

Sydney Children's Hospital, Randwick is one of Australia's leading specialist medical centres for children, offering a safe and friendly healing environment for children from Sydney, rural and regional NSW, and beyond.



Each year, our Hospital admits over 18,000 critically ill and injured children, treats 37,000 children who come through our Emergency doors, and our expert medical staff touch the lives of children through the Hospital's Outreach and Outpatient Services, providing more than 313,000 occasions of specialist care. Our award-winning, world-class Hospital is a leader in its field and continues to work to improve the treatment of, and care for, this and future generations of sick children.



SYDNEY CHILDREN'S HOSPITAL FOUNDATION EXISTS TO PROMOTE THE PREVENTION AND TREATMENT OF ILLNESS AND INJURY IN CHILDREN.



As the principal fundraising body for the Hospital, the Foundation works with individuals, businesses and organisations in the community to support the Hospital.





MESSAGE FROM OUR CHAIRMAN

I am pleased again to distribute our Annual Report amongst our many and loyal supporters. Thanks for your continuing generosity and trust.

In the Financial Year of 2012, Sydney Children's Hospital Foundation was able to contribute nearly \$7 million to the Randwick campus of Sydney Children's Hospital Network, facilitating vital supplemental investment in equipment, research and senior medical staff. Any visit to the campus now reveals significant construction work on the new Clinical Services Building, slated for completion in March 2013. The Foundation is the major funder of that project, with our commitment of up to \$15 million.

We are justly proud of our achievements in very difficult conditions for fundraising. Full credit to our CEO Adam Check and his able and energetic team for their fabulous efforts.

The Foundation board continues to evolve, with the appointment of Jane Freudenstein in February and Ron Malek and Gina Cass-Gottlieb post 30 June. We are delighted that people of this calibre have accepted our invitation to join.

During the year, we also farewelled Kathy Shand and Skye Leckie. To Skye especially, the Foundation owes a huge debt of thanks. Her many years as a director, then Deputy Chair, as well as the driving passion behind the Gold Dinner for an extended period, have made a significant positive difference in the life of the Foundation and Sydney Children's Hospital.

We are working earnestly next year towards satisfying our commitment to the Clinical Services Building. We look forward to your continuing support.

A handwritten signature in black ink, appearing to read 'JF'.

JACK FORD
Chairman



MESSAGE FROM OUR CHIEF EXECUTIVE

It is with great pride that I present to you, our generous supporters and friends, the 2011/12 Annual Report for Sydney Children's Hospital Foundation.

Firstly, thank you for being an integral part of our Hospital family. Without question, thanks to your support of our work financially, and through your time and advocacy, you play a major part in positive outcomes for children and families afflicted by serious illness and injury.

This year, the impact of your support reached further than ever. Our investment back into the Hospital spanned research, services, equipment and capital, along with support for education, training, and financial relief for families during hardship.

The construction of the Hospital's Clinical Services Building, featured on page 56 is the most significant capital works project for the Hospital in 18 years. What has been a dream for many years has now become a reality for our Hospital, and the many services moving into the new wing will be further enhanced and benefit from these customised and dedicated spaces for treatment in areas such as respiratory medicine, mental health and rehabilitation. Thanks to the generous commitment of our major partners, this building will be completed on time and without compromise in early 2013.

Research by our Cancer Centre has made great progress this year. Particularly of note, clinical trials into curing the 'incurable' cancers have been undertaken to assist children treated for cancers with lower cure rates such as neuroblastoma and brain tumours. This work puts Sydney Children's Hospital at the forefront of research into childhood cancer, and enables our children to benefit from the innovative improvements our specialists are producing in the treatment of children with cancer.

Sixteen of our paediatricians trained to become specialists of the future in their chosen fields and were supported through a Fellowship position funded thanks to your support.

We have a proud tradition of investing in the future of paediatric healthcare and our Fellowship Program has made significant impacts upon skill development, research and teaching at Sydney Children's Hospital. Turn to page 74 for more information.

We continued to provide support for our families when they needed it most, especially for those who live outside our local area and travel from across the state for specialised care. Thanks to the generosity of our partners, accommodation and support options were made available for families.

Health promotion grants and scholarships were also granted to allied health and nursing staff, continuing our commitment to excellence in health promotion and education.

These are only some of the special and important ways that you have helped our Hospital. To read more on the impact of your generosity, please refer to page 64.

To our valued supporters, thank you again for being part of our Hospital family.

Best wishes,

ADAM M CHECK
Chief Executive

MESSAGE
FROM
SYDNEY
CHILDREN'S
HOSPITALS
NETWORK
CHIEF
EXECUTIVE

The Annual Report provides us with an important opportunity to reflect upon the achievements of Sydney Children's Hospital, Randwick and to recognise and thank those who have contributed to our endeavours.

The staff at the Hospital are extraordinary in their commitment and have such a sense of optimism and achievement in the work they undertake. This optimism stems from recognition that they can make a difference to the lives of children and their families. Whether it is in clinical care, research or education, all efforts are focussed on improving the health and well-being of children.

There continues to be a sense of excitement at the Hospital as the new Clinical Services Building takes shape. This of course will assist us greatly in delivering our services and creating an environment that is modern and designed for contemporary health service delivery for children.

What we never lose sight of is the significant contribution made by the community in assisting us. Donors and supporters have played a crucial role across a range of programs within the Hospital, and the new building would not be the significant asset it represents without the commitment of Sydney Children's Hospital Foundation and the support from donors.

On behalf of all our staff and our patients, thank you for your generosity. Not only does your ongoing support help us achieve the remarkable results that we do, it also represents a significant endorsement and recognition of the value of the work that we do.

Thank you.



ELIZABETH KOFF
Chief Executive
Sydney Children's Hospitals Network





THE MOST PRECIOUS
JEWEL YOU CAN WEAR
AROUND YOUR NECK
ARE THE ARMS OF
YOUR CHILDREN

MYLES

MYLES' STORY

Myles attends the Allergy Clinic at Sydney Children's Hospital. He was referred to the Clinic by his allergist and immunologist after testing positive to skin prick tests. After undergoing some more tests, it was established that three year old Myles is allergic to eggs, which he now avoids, and he's feeling much better.



ORGANISATION & OPERATIONS

REGULATORY FRAMEWORK

Sydney Children's Hospital Foundation is a registered company under the Corporations Act 2001 and holds a charitable fundraising authority under section 16 of the Charitable Fundraising Act 1991. The Foundation is endorsed as a deductible gift recipient according to the Income Tax Assessment Act 1997 and has DGR1 status as a Health Promotion Charity.



THE BOARD

CHIEF EXECUTIVE



GOLD WEEK TELETHON ADVISORY BOARD



AUDIT & RISK COMMITTEE



NOMINATIONS COMMITTEE



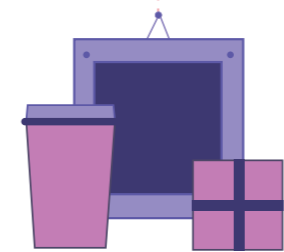
CAPITAL APPEAL COMMITTEE

FUNDRAISING



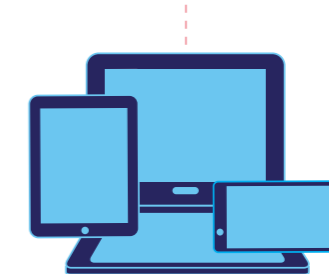
- Partnerships
- Events
- Direct Marketing

OPERATIONS PEOPLE & CULTURE

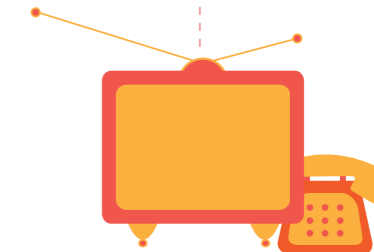


- Star Café
- Gift Shop
- Art Program

MEDIA & COMMUNICATIONS

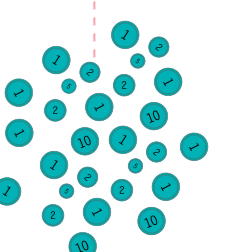


GOLD WEEK TELETHON



- Gold Events
- Pedal 4 Kids
- Community fundraising

FINANCE



EXTERNAL ADVISORS

We are privileged to have the support of the following external advisors:

- Allens
- King & Wood Mallesons
- Hill Rogers Spencer Steer

BUSINESS ENTERPRISES

Our Star Café and Gift Shop operate at the Randwick campus to service Hospital staff, patients and families. All profits from these businesses go directly back to the Hospital to fund critical needs.

BOARD MEMBERS



JACK FORD

CHAIR – APPOINTED AUG 1999

Jack Ford is a lawyer and consultant to the media industry. His clients include Telstra Corporation, the TV1/Sci-Fi Partnership and the City of Sydney. He is a director of Ignite Media Brands and deputy chair of AVCS. He was previously a partner at Blake Dawson and a senior executive at Sony Pictures in Australia.

I feel strongly about giving back to the community and am deeply honoured to have been involved with a premier charity in such a significant way for over 15 years.



JUSTIN MILNE

DEPUTY CHAIR – APPOINTED MAR 2007

Justin Milne is a Non-Executive Director of Tabcorp Holdings Ltd., Deputy Chairman of Quickflix Ltd., and a Non-Executive Director of NetComm Wireless Ltd. He is also Chairman of the National Basketball League and a Non-Executive Director of Basketball Australia Ltd. He was Group Managing Director at Telstra BigPond, CEO of The Microsoft Network and of OzEmail. He is a past board member of the SA Economic Development Board and a past President of the Internet Industry Association.

One of my children was successfully treated for leukaemia at Randwick and over a few years I gained a tremendous respect for the Hospital and its staff.



CHRIS JORDAN AO

TREASURER – APPOINTED AUG 2004

Chris Jordan is the Chairman of the Board of Taxation and the Business Tax Working Group (advisory bodies to the Federal Treasurer) and the Committee for Sydney. He is a Board Member of the Bell Shakespeare Company and a member of the Audit & Risk Committee of the Art Gallery of NSW. Mr Jordan is a Fellow of the Institute of Chartered Accountants, the Australian Institute of Company Directors and the Taxation Institute of Australia.

Having been the parent of a 13 year old cancer patient and seen the great work of the Hospital and the tremendous dedication of its staff, I wanted to do anything I could to advance this great facility which is for the benefit of all the children of NSW.



JANE FREUDENSTEIN

APPOINTED FEB 2012

Jane Freudenstein has over 15 years experience in strategic brand development, working at DMB&B, J Walter Thompson, Young and Rubicon and as Director of Client Services at Whybin Lawrence TBWA. She has been involved in pro bono work for the Fred Hollows Campaign, Special Olympics and the National Trust of Australia. Jane was Marketing Director of Nickelodeon, and is passionate about kids' issues and wellbeing. She also champions cultural arts in Australia and was previously a Director on the board of Sydney Children's Choir and Gondwana Voices.

The wonderful staff at Sydney Children's Hospital, Randwick saved my daughter's life. I see it as a privilege to join the Board and help support their work.



SIMON HICKEY

APPOINTED OCT 2009

Simon Hickey joined Qantas in September 2004 as Head of Group Strategy. Mr Hickey began his career in Arthur Andersen's Business Consulting Group. Between 2001 and 2004, he was CFO for Bovis Lend Lease Americas. Prior to this, he held various roles with Lend Lease including Bovis Lend Lease CFO Asia Pacific. In May 2007, Mr Hickey was appointed CEO, Qantas Frequent Flyer, responsible for establishing the Loyalty business, and in June 2012 he was appointed CEO, Qantas International & Freight. Mr Hickey is a Director of AUX Investments Ltd., Australian air Express and Star Track Express.

Being the father of three young children gave me a deeper insight into the vitally important work that the Hospital does caring for our community's sick kids and their families. I was very keen to get involved and help out in any way I could.



ELIZABETH KOFF

APPOINTED OCT 2010

Elizabeth Koff commenced her career as an allied health professional working in a range of clinical settings both in NSW and VIC and undertook further qualifications in public health and health policy. She has held a number of Senior Executive planning and operational roles within the NSW health system, including Director Population Health, Planning and Performance in South Eastern Sydney Illawarra Area Health Service (SESAHS) and Director of Clinical Operations, SESAHS. In September 2010, Ms Koff was appointed Chief Executive of the Sydney Children's Hospitals Network. In 2011, she completed the Australian Institute of Company Directors course.

Being a member of the Foundation Board enables the benefits of the Foundation's fundraising efforts to be maximised within the Hospital to those areas where the most difference can be made to the health of children.



DUNCAN MAKEIG

APPOINTED OCT 2007

Duncan Makeig is the Group General Counsel, External Relations & Sustainability Director of Lion Pty Limited. He is Chairman of Heineken Lion and a Director on the Board of Bevchain (Linfox joint venture). Mr Makeig has been practising law in Australia, the USA and New Zealand for over 25 years.

I'm pleased to have the opportunity to contribute to the valuable work that the Foundation does in supporting children and their families through difficult times.



DR. MATTHEW O'MEARA

APPOINTED OCT 2010

Dr. O'Meara is a paediatric emergency physician and the Director of Emergency at Sydney Children's Hospital, Randwick. He trained in paediatrics at the Hospital and has been a staff specialist in Emergency for 17 years. Through roles in the Hospital, in NSW and nationally, he has been an advocate for improving the emergency care of children.

As a clinician at the Hospital, I know that we care for children better because the Foundation helps fund the buildings, the equipment, research and specialist trainees.



PROFESSOR LES WHITE AM

APPOINTED APR 1995

Prof Les White was appointed as the inaugural NSW Chief Paediatrician in September 2010. He is the former Executive Director of Sydney Children's Hospital, Randwick (1995 – 2010), Convenor of the Greater Eastern and Southern NSW Child Health Network (2001– 2010) and the John Beveridge Professor of Paediatrics (2005 – 2010). In 2007 he received an Order of Australia award for service to medicine, medical administration and the community in the field of paediatrics.

The Foundation serves the children of NSW through their support of Sydney Children's Hospital. Children's health and wellbeing is the central theme of my professional life.



SKYE LECKIE

NOV 1998 – OCT 2011
(RETIRED BOARD MEMBER)

Skye Leckie has been in public relations and marketing for over 20 years, working primarily for a national retail chain and subsequently running her own public relations firm, Skye Macleod Enterprises, consulting to various companies on marketing. Ms Leckie has been on the highly successful Gold Dinner Committee for 14 years and was the Chairman of the Committee for three years. She is a Member of the Taronga Park Zoo Foundation and supports the Chris O'Brien Cancer Centre at Camperdown.



KATHY SHAND

AUG 2005 – OCT 2011
(RETIRED BOARD MEMBER)

Kathy Shand is the former Publisher of the Australian Jewish News and has been involved in media and publishing for over 20 years. She is a past Board Member of the Royal Hospital for Women's Foundation and the Steering Committee of the RPA Foundation, Royal Prince Alfred Hospital. Since completing her Master of International Relations she has been working at the University of Sydney.

RETIRED MEMBERS

SCHF

BOARD

Sydney Children's Hospital Foundation's Board of Directors is comprised of nine individuals. They are responsible for the achievement of the Foundation's objectives and the ultimate performance of the organisation.

The number of Directors may not be less than six or more than 12 and Directors are appointed for three year terms. All Directors will be eligible to be reappointed for a second three year term but reappointment for a third or subsequent three year term must be approved by at least 75% of the Directors. Directors are not paid any remuneration for services as a Director.

The Directors may delegate, and revoke the delegation of, any of their powers, other than powers required by law to be dealt with by Directors as a board, to a Committee or Committees consisting of one or more of their number as they think fit.

There are currently four sub-committees:

GOLD WEEK TELETHON ADVISORY BOARD

Assists the Foundation in the pursuit and refinement of a five year strategy to grow and develop the Gold Week Telethon to achieve \$10M in annual revenue by 2016.

ADAM CHECK (CHAIR)

JANE FREUDENSTEIN

ADAM TRIPPE-SMITH

AUDIT & RISK COMMITTEE

Oversees the financial management of the Foundation including the annual audit process, compliance with legal, regulatory and statutory requirements, the Foundation's investment strategy and portfolio as well as all risk management policies and procedures.

CHRIS JORDAN (CHAIR)

JACK FORD

SIMON HICKEY

ADAM CHECK

NOMINATIONS COMMITTEE

Assists the Board in fulfilling its corporate governance responsibilities in regard to Board appointments and performance, Directors' and Committee Members' induction program and succession planning for Board and Committees.

DUNCAN MAKEIG (CHAIR)

JACK FORD

JUSTIN MILNE

LES WHITE

ADAM CHECK

CAPITAL APPEAL COMMITTEE

Assists the Foundation by raising \$15 million for the construction of the Hospital's new Clinical Services Building, while generally promoting the Appeal to all constituencies to maximise awareness of the Appeal, giving opportunities and other promotional activities.

JUSTIN MILNE (CHAIR)

LES WHITE

GINA CASS-GOTTLIEB

ADAM CHECK

LEADERSHIP TEAM



ADAM CHECK

CHIEF EXECUTIVE
4 YEARS - SINCE JAN 2008

Overall strategic direction, governance,
Capital Appeal, business development



REBECCA HAVAS

DIRECTOR, FUNDRAISING
7 YEARS - SINCE MAY 2005

Fundraising, major partnerships,
events, direct marketing, bequests,
donor management



SALLY LONG

DIRECTOR, OPERATIONS, PEOPLE & CULTURE
6 YEARS - SINCE MAR 2006

Human resources, culture, facilities & space planning,
Art Program, technology, administration and retail



KATE MEIKLE

DIRECTOR, MEDIA & COMMUNICATIONS
7 YEARS - SINCE OCT 2005

Branding, creative development, publicity,
media partnerships, online communication,
relationships with ambassadors and advocates



EDWARD WALES

DIRECTOR, FINANCE
2 YEARS - SINCE MAY 2010

Overall finance operations, asset
management, audit & risk including
insurance, investment management



CHILDREN
MAKE
LIFE
IMPORTANT



ALYSSA'S STORY

When ten month old Alyssa developed rashes around her ankles, her mum Amanda rushed her to the Hospital, fearing she had meningitis. However, while this was ruled out, doctors told her devastated parents that little Alyssa had infantile ALL - Acute Lymphoblastic Leukaemia. Following months of intensive chemotherapy, brave Alyssa underwent a cord transplant eight months after being diagnosed. Since then, she has finished treatment and is now in remission, much to the delight of her parents and little sister.

OUR PEOPLE

OUR STAFF EMBODY OUR CORE PURPOSE AND VALUES AND WE GREATLY VALUE THEIR PASSION, ENTHUSIASM AND PROFESSIONALISM.

DEVELOPMENT AND TRAINING

Sydney Children's Hospital Foundation places great importance on the development of our staff at all levels of the organisation. Each year, in conjunction with their managers, all staff (full time and part time) set a series of personal and professional development goals that are reviewed on a quarterly basis. In addition, staff are encouraged to take part in training and development opportunities throughout the year to assist them in achieving their goals. A modest budget is allocated each year to allow for these activities to occur.

Over the 2011-2012 financial year, examples of training and development activities our staff engaged in include: AIM management course, Excel training workshop, executive coaching, external mentoring program and grant writing seminars.

STAFF RECOGNITION AWARDS

In 2011-12, two staff recognition awards were introduced to promote the core values of the Foundation and to reward hard work and good leadership. These awards are open to all permanent full time and part time staff.

FAY BRADSHAW STAFF RECOGNITION AWARD

Fay Bradshaw was an employee of the Foundation from 2000 until 2010. During this time Fay embodied the spirit, and epitomised the values true to the core of the Foundation. Fay's long term commitment to the Foundation was outstanding, and her superior ability to work with people of all ages and status was invaluable. In recognition of Fay's outstanding efforts, teamwork and exemplary work ethic, a staff recognition award is awarded twice annually (March and August) to an individual that demonstrates these qualities and more. This award is peer-nominated.

AWARD RECIPIENTS

AUGUST 2011
MONA KHAMOU
Donations Manager

MARCH 2012
GLEN SOMMER
Retail Manager

MARCH 2012
ANGELA WONG
Events Coordinator

SCHF LEADERSHIP AWARD

The SCHF Leadership Award aims to recognise and encourage emerging leaders and to provide the recipient with additional training and support to nurture their leadership skills. One individual is awarded annually (August) and receives a leadership development scholarship to fund further education and development activities relevant to their role and career aspirations. This award is self-nominated.

AWARD RECIPIENT

AUGUST 2011
LOUISE CLARIDGE
Partnerships Manager



VOLUNTEERS



THANK YOU

THANK YOU TO OUR WONDERFUL VOLUNTEERS FOR THEIR TIME, ASSISTANCE AND COMMITMENT TO OUR HOSPITAL.

Our volunteers may come from all different types of backgrounds, but they all come to us with a unified purpose: to make a difference to the lives of sick kids. **520 volunteers donate their time to help us every year** and for that we will be forever grateful.

At our fundraising events, **116 people sold raffle tickets, spotted for auction bidders and bucket collected.** Armed with big hearts and even bigger smiles, **230 volunteers came to us with their colleagues under our Corporate Volunteering Program** and helped to decorate the wards for Gold Week Telethon. Others helped out by doing community service as part of a high school program, assisted in the Star Café kitchen, cooked barbeques for special occasions and spent time with our patients to relieve their families, even for just a short amount of time.

Volunteers are the life-blood of the Hospital and **150 volunteers proudly volunteer on the wards through Play Therapy, administrative support and the weekend play program.**

Sydney Children's Hospital Foundation holds 13 fundraising events throughout the year. For each event, we work closely with an organising committee of dedicated volunteers who work tirelessly on all aspects of the event to ensure it raises maximum funds for the Hospital.

By far our largest gathering of volunteers was at the Pinpoint Call Centre for the Gold Week Telethon 2012. **160 volunteers manned the phone lines for nine hours on Monday June 11**, taking an unbelievable 9,110 donation calls from our supporters across NSW.

The value that our volunteers provide our organisation is outstanding. We could never put a price tag on the spirit, enthusiasm and generosity of our volunteers, but if we were to pay our volunteers for their time, **over \$161,000 would be required to come close to valuing their support***. Thank you to all of our wonderful volunteers who believe that these funds are better spent making a difference to the lives of children and their families.

Our volunteers are exceptional people who give their time, expertise and dedication.

If you would like to find out more about volunteering opportunities, email info@schf.org.au or call 02 9382 1188.

*based on an average 2010 Australian wage of \$24.63 per hour according to The Australian Bureau of Statistics.

SID

SID'S STORY

Twelve year old Sid is a remarkably lucky young man. After a knee boarding accident partially dislocated the base of his skull from his neck bones, and left him with a broken jaw, a life-saving 'halo' held his spine and head in place. He spent a long time in Intensive Care recovering from his injuries, and undergoing intense rehabilitation. Due to nerve damage to his tongue, Sid needed speech therapy to learn to talk again, and also had daily physiotherapy to get back on his feet. Sid spent three months in the Hospital, but is home now in Coffs Harbour and back doing the things he loves, including playing tennis!



SUSTAINABILITY

WE USE TOILET PAPER AND PAPER TOWELS FROM A PLANET ARK ENDORSED BRAND

WE USE SUSTAINABLE PRODUCTS FOR THE KITCHEN INCLUDING BIODEGRADABLE DISHWASHING DETERGENT, RECYCLED BIN LINERS

ETHICAL TEA

WE USE AUSTRALIAN MADE 80% RECYCLED PAPER

INTRODUCTION OF ONLINE TICKETING FUNCTIONALITY FOR OUR EVENTS

NO NEED TO PRINT AND MAIL RECEIPTS, GUESTS ARE ENCOURAGED TO PRESENT A SOFT COPY OF THEIR TICKET ON THEIR SMART PHONE

WE USE RECYCLED TONER CARTRIDGES ON ALL OUR PRINTERS

INCREASED USE OF SOCIAL MEDIA HAS ALSO MINIMISED PRINTING OF TRADITIONAL COMMUNICATION MEDIUMS SUCH AS NEWSLETTERS

OUR WEBSITE WITH DONATION FACILITY ENABLES US TO ENCOURAGE ONLINE DONATIONS WHICH AUTOMATICALLY GENERATE ONLINE RECEIPTS.

THIS MINIMISES HARD COPY PRINTING AND MAILING OF RECEIPTS AND IS BECOMING A POPULAR WAY FOR DONORS TO GIVE.

A COMPARISON

ONLINE DONATIONS FOR 2010-11:	SCHF WEBSITE: 633
GOLD WEEK TELETHON WEBSITE:	3,049
ONLINE DONATIONS FOR 2011-12:	SCHF WEBSITE: 2,080
GOLD WEEK TELETHON WEBSITE:	6,751



MOVING FORWARD

The Foundation appointed a member of staff to focus on promoting sustainable awareness throughout the business and to implement an ongoing strategy in reducing our ecological footprint.

Two new initiatives will be introduced and implemented to the staff every quarter. Priorities will be more effective waste management, paper reduction within the office and at events and creating more awareness among staff.

BUSINESS

STRATEGY

1

2

3

4

5

REVIEW OF GOALS 2011/2012

STRUCTURE & EXECUTE A CAPITAL FUNDRAISING APPEAL FOR THE CLINICAL SERVICES BUILDING

- Establishment of Capital Appeal Committee chaired by Justin Milne (Director, SCHF Board)
- 4 major partners secured
- First public 'call to action' to community at Gold Dinner raising \$1 million for Adolescent Mental Health
- Identification of timeframe for public appeal – September 2012

DEVELOP A 5-YEAR STRATEGY FOR THE GOLD WEEK TELETHON

- Establishment of Gold Week Telethon Advisory Board chaired by Adam Check (Chief Executive)
- 5 year strategic plan developed, presented and well received by key stakeholders
- Successful 3rd Gold Week Telethon held on 11 June 2012 - \$2.61 million raised

DEVELOP & IMPLEMENT STRATEGY TO LEVERAGE SCHF'S EXPANDED TAX STATUS

- Detailed research conducted by specialist consultants on the impact and opportunities of a change in tax status
- Strategy developed for a significant increase in applications for trust and foundation grants
- Applications submitted for a variety of Hospital programs and services

CONTINUOUS IMPROVEMENT OF REPORTING TO DONORS

- Development of regular, streamlined reporting mechanisms for all donors
- Reports well received by donors resulting in low donor attrition

ORGANISATIONAL SUCCESSION PLANNING

- Succession plan developed, presented and in place for Board of Directors
- Engagement of Centre for Executive Development to create succession plan and talent development for staff. This will continue into 2012-2013

YOU ARE
THE GREATEST
PART OF OUR
ADVENTURE





YUTA'S STORY

Yuta was born two weeks premature on Christmas Eve with a cyst the size of a large grapefruit growing in his abdomen. A very rare condition, it was the first case the Hospital had seen in around ten years. At just one day old, on Christmas Day, Yuta underwent surgery to remove the cyst. He spent three months recovering, and went home in time for Easter. Since then Yuta has grown into a happy, thriving eight month old.



MEDIA & COMMUNICATION

OUR ABILITY TO COMMUNICATE EFFECTIVELY AND SPREAD THE WORD ABOUT THE HOSPITAL AND OUR FUNDRAISING EFFORTS IS CRUCIAL TO OUR SUCCESS.

This is only possible thanks to the great and continued support of the media who help tell our stories and motivate the community to give. This year, 500 articles were published across the state and over \$2.25 million worth of pro bono media support was achieved across broadcast, outdoor and online media.

We would particularly like to acknowledge the support of: Channel Nine, WIN, NBN, 101.7 WSFM, The Daily Telegraph, APN Outdoor, AdShel, NewsLocal, 2GB, 2DayFM, Mi9 and Sunday Magazine for their generous media partnerships and support.

We strive to keep our donors up-to-date throughout the year through the following ways:

- Annual report, issued to every donor who gave over \$500 in the past financial year
- Champions for Children event, our annual thank you and recognition evening held in October
- Bi-annual newsletters
- Regular email newsletters
- Regularly updated website www.schf.org.au
- Our social media profiles on Facebook, Twitter and YouTube

DO NOT OVERTAKE TURNING VEHICLE

2292 ST

2292



children's hospital
foundations australia

Princess Margaret Hospital Foundation WA
Children's Health Foundation QLD
Royal Children's Hospital Foundation VIC
Sydney Children's Hospital Foundation NSW
Women's & Children's Hospital Foundation SA

CHFA

CHILDREN'S HOSPITAL FOUNDATIONS AUSTRALIA

Children's Hospital Foundations Australia (CHFA) is an organisation that encompasses five of the major Children's Hospitals across the country with the mission to work towards excellence in child health. Sydney Children's Hospital Foundation proudly partners with the four other Hospitals in this alliance.

This year, CHFA has raised in excess of \$1 million for the first time, with a portion of that directed to Sydney Children's Hospital Foundation. This in turn is used to benefit a number of areas within the Hospital. Some of the key highlights from the past 12 months include Bank of Queensland's amazing achievement, reaching \$1 million for CHFA since the implementation of its "Banking on our Kids" appeal six years ago, and \$250,000 raised by supporters at Partylite since they first came on board.

Another significant development for CHFA was a partnership with Amalgamated Holdings Limited, who appointed CHFA as their charity partner for a three year period. A charity screening of The Lion King 3D was held recently with very positive results, and AHL has gone on to raise over \$320,000 for direct funding of essential equipment and services throughout the five hospitals.

The Foundation is delighted to be in this partnership with CHFA, especially because of its strong influence on maintaining links across the country. It will only serve to grow the national profile of the Hospital and increase potential fundraising ability.



MEET SUNNY

OFTEN FOUND BOUNCING THROUGH THE HALLWAYS AND WARDS OF SYDNEY CHILDREN'S HOSPITAL IS OUR FOUNDATION MASCOT, SUNNY.

Sunny loves dancing, giving high-fives, playing peek-a-boo and posing for pictures, but what he loves MOST is visiting the sick kids to put a smile on their faces and brighten up their day!

E

ELIZABETH'S STORY

Baby Elizabeth suffered her first epileptic seizure at three months. The anti-seizure medication she was prescribed made her very drowsy and as a result, she spent a lot of time sleeping on her back. Because her little skull was still forming, the pressure from lying down made the back of her head quite flat, and she was referred to the Helmet Clinic at the Hospital. At eight months, Elizabeth had her helmet fitted, which she wore at night. The helmet helped reshape the skull before it finished growing. Now 15 months old, Elizabeth is still undergoing treatment.





GOLD WEEK TELETHON

The third annual Gold Week Telethon was held on Monday 11 June, 2012 and built on the success of the previous two Telethons. Broadcast live on Channel Nine, WIN and NBN from 9am to 4.30pm, the day featured a galaxy of stars who hosted, performed challenges and answered phones, all in aid of Sydney Children's Hospital.

Thanks to the generosity of the viewing public, and the participation of the community who got involved however they could, the 2012 Gold Week Telethon raised a massive \$2.61 million. Because of this overwhelming show of support, much needed funds can now help to purchase vital pieces of medical equipment and support critical frontline services across all areas of the Hospital.

A number of Channel Nine presenters took part in the day, including Karl Stefanovic, Lisa Wilkinson, Ben Fordham, Deborah Knight, Peter Overton, and Amber Sherlock. WSFM's Jonesy and Amanda also hosted their breakfast show live from the Channel Nine studios.

Many familiar faces answered calls in studio and took donations, including Channel Nine's Jaynie Seal, Jesinta Campbell, House Husbands stars Julia Morris and Anna McGahan, as well as former test cricketer Brett Lee, and special guest Hospital Ambassador

Nicole Kidman. The audience was also entertained on the day by top Australian artists Rikki-Lee Coulter, Jack Vidgen, Damien Leith and Tim Freedman.

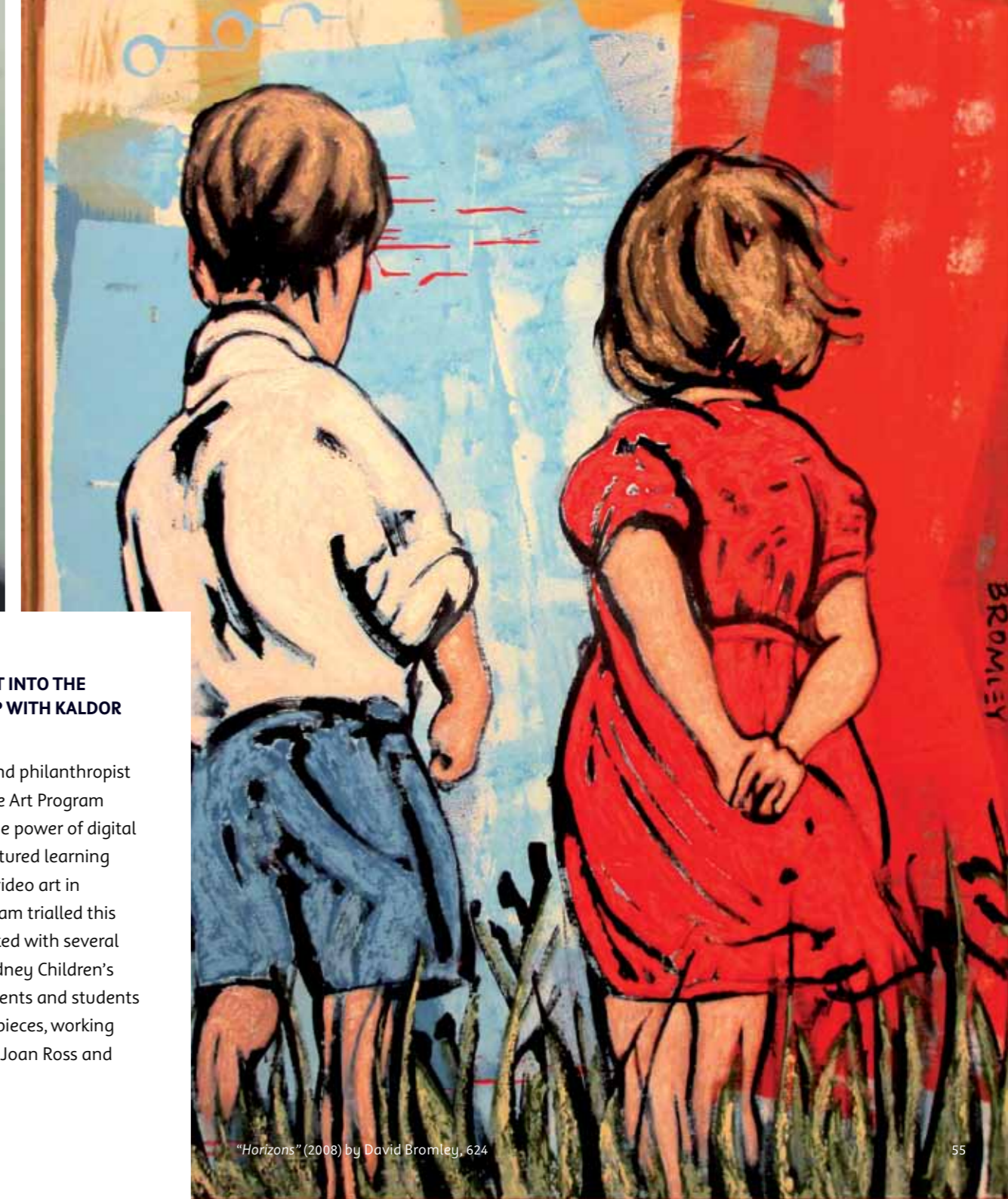
Several organisations made generous donations, including BIG W, Harvey Norman, Crust Pizza, Kids With Cancer Foundation, Coles, Australian Lions Childhood Cancer Research Foundation, Clubs NSW, the NSW Premier's Department, the Steven Walter Children's Cancer Foundation and WSFM (which raised \$44,500 to fund a music therapist in the Hospital). Nicole Kidman and Keith Urban also made a significant contribution.

We are extremely grateful to everyone who took part in or donated to the Gold Week Telethon, and owe a huge debt of thanks to our presenting partners, Channel Nine, WSFM, the Daily Telegraph and 2GB. The continued support of the community is vital to our future, as we cannot make a difference to sick children across NSW and beyond without your assistance. We truly appreciate your help.

Find out more at www.goldweek.org.au



"Calling Horses" (2007) by Kerrie Lester, 558



"Horizons" (2008) by David Bromley, 624

ART PROGRAM

THE ART PROGRAM IS A UNIQUE PART OF OUR HOSPITAL, BRIGHTENING THE WALLS OF THE BUILDINGS WITH BEAUTIFUL WORKS FROM VARIOUS ARTISTS. THE PROGRAM HAS HAD A SUCCESSFUL YEAR, WHICH WAS DEFINED BY THE EXCITING MAJOR PARTNERSHIP WITH LOUIS VUITTON.

NEW ACQUISITIONS FOR THE CLINICAL SERVICES BUILDING

Art Collection this year to adorn the walls of the new Clinical Services Building and was supported by some amazing collectors, galleries and consultants in the quest to build a significant array of new Australian artworks. To date the Art Program has acquired artworks by renowned sculptor Linda Klarfeld, Jasper Knight, Carlos Barrios and a wonderful work entitled "Horizons" (2008) by David Bromley. The Bromley was purchased with funds donated by a group of donors in honour of Sylvia and Richard Palonis, and was brokered by A.N.G. Art Consulting.

INTRODUCING DIGITAL ART INTO THE HOSPITAL IN PARTNERSHIP WITH KALDOR PUBLIC ART PROJECTS

The renowned art patron and philanthropist John Kaldor approached the Art Program with an idea to introduce the power of digital art through a series of structured learning workshops entitled MOVE: video art in Hospitals. In 2012, the Program trialled this amazing program and worked with several partner schools and the Sydney Children's Hospital School to help patients and students create their own digital art pieces, working with leading artists such as Joan Ross and Todd Fuller.

NEW CLINICAL SERVICES WING



IN LATE 2011, GROUND WAS BROKEN ON THE NEW CLINICAL SERVICES BUILDING. THIS WING WILL COVER 1220M² OVER FIVE FLOORS AND WILL COST \$27.7 MILLION TO CONSTRUCT. IT WILL ADD VALUABLE RESOURCES TO THE SERVICES ALREADY AVAILABLE, AS WELL AS CREATE BRAND NEW AMENITIES FOR OUR PATIENTS AND THEIR FAMILIES.

- Some of the facilities that will be housed in the new Wing include:
- An eight bed Child and Adolescent Mental Health Unit;
 - A comprehensive Rehabilitation Unit;
 - A 28-bed Surgical Ward;
 - A new Family Centre for parents and carers;
 - A new Lung Function Testing Facility for infants;
 - And the new location of our Child Protection Unit.

The Wing is due to open in early 2013. It is one of the most exciting events in the Hospital's history and will benefit a huge number of young patients from across NSW and beyond. The addition of this infrastructure to the existing facility is of immense value to the Hospital, and will cement the status of the Hospital as a world class establishment.

The Foundation has committed to raising \$15 million towards the completion of the new Wing. We would like to recognise the major contribution of the following most generous partners:

- Coogee Bay Hotel
- Fairbridge Foundation
- Gold Dinner 2012
- The Lewis Foundation
- Sargents Pies Charitable Foundation

The public are also encouraged to play their part in our new wing. All gifts of \$10,000 will be recognised with a unique and personalised handprint plaque that will feature in perpetuity on a prominent wall of the ground floor of the new Wing of Sydney Children's Hospital, Randwick. Plaques will contain a name and an optional handprint (e.g. the donor's, their child's, or a family member's). There will be just 100 of these special plaques in the building.

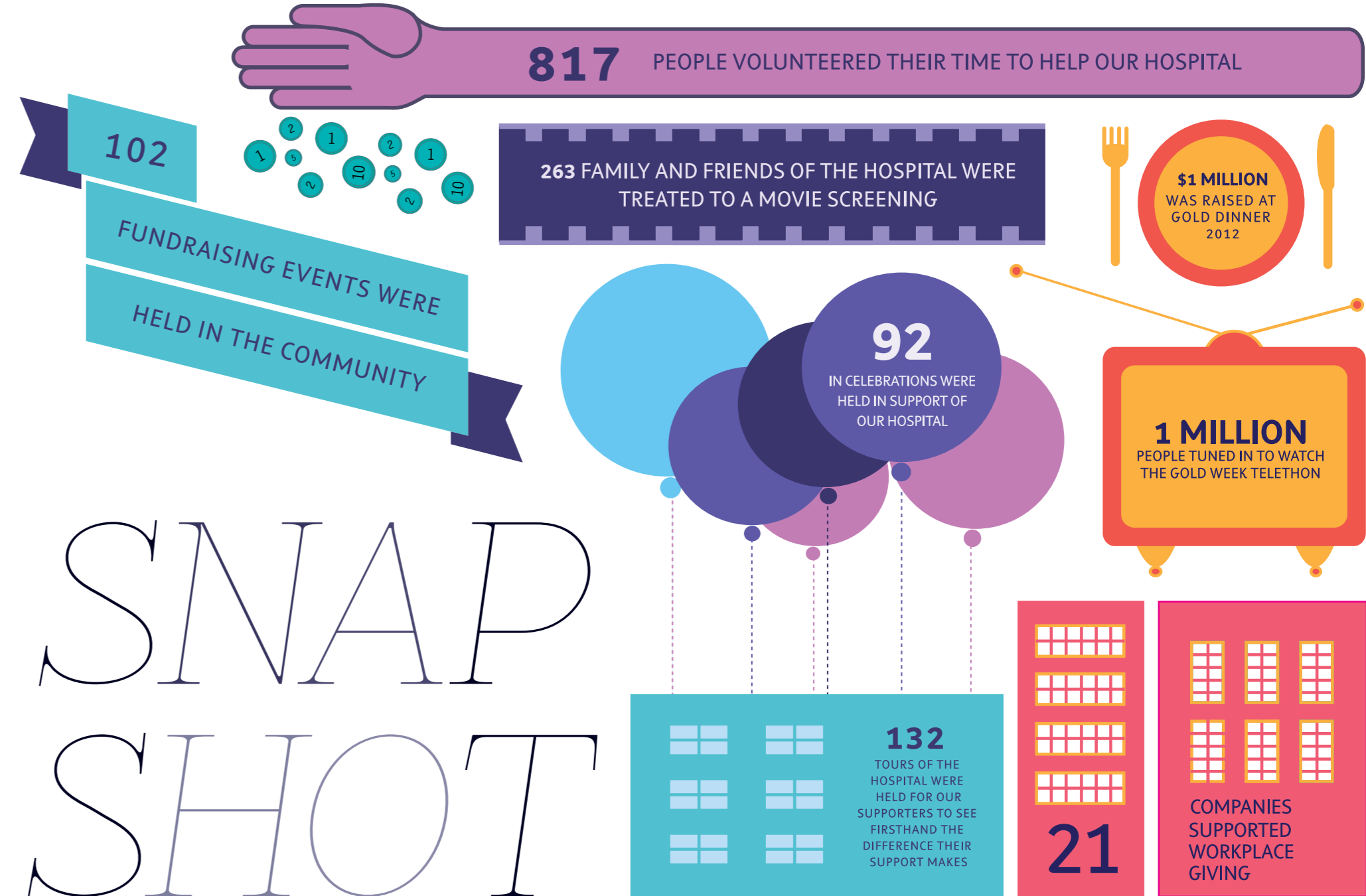
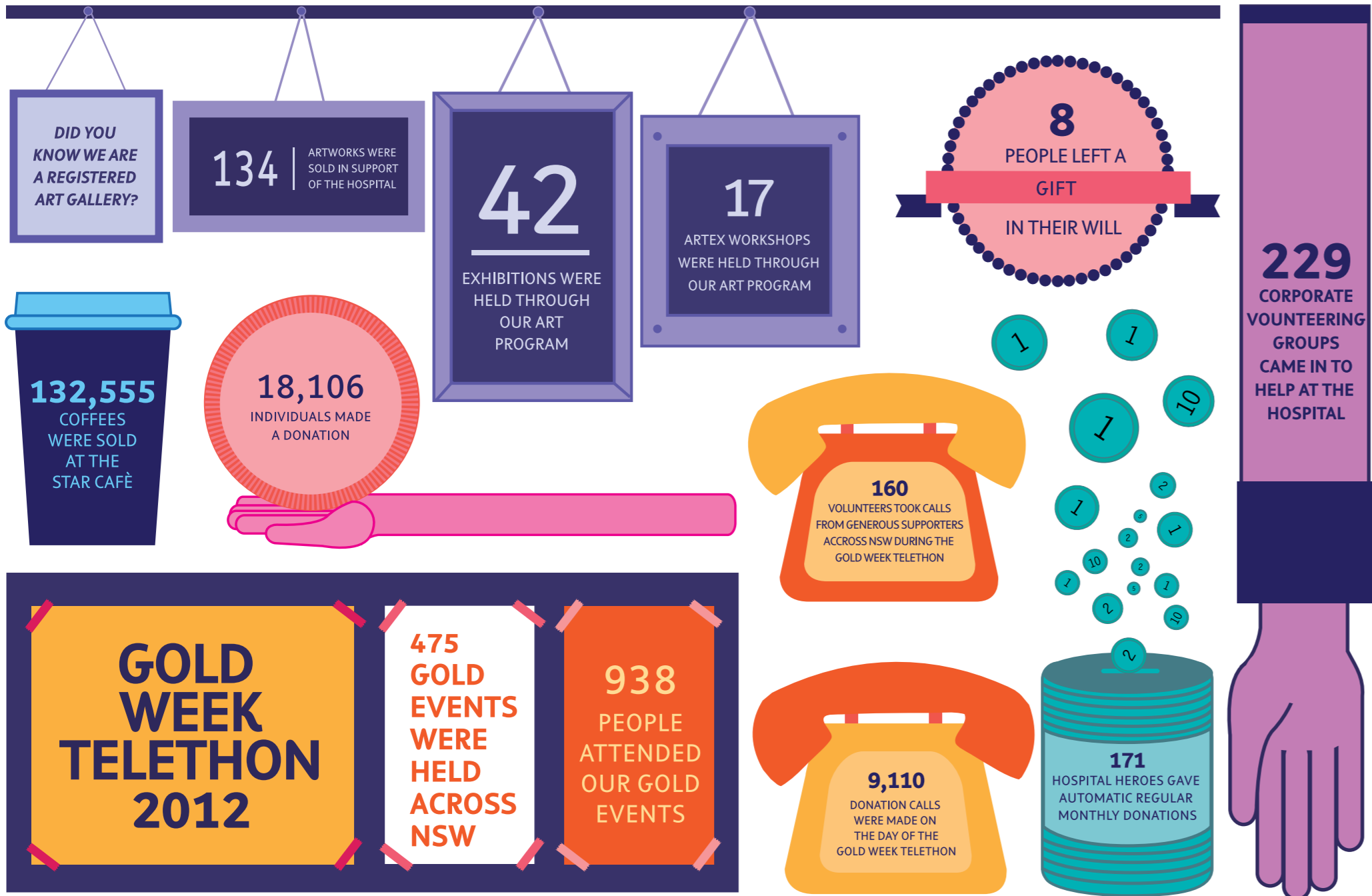
Each gift of \$500 or more will be remembered with a personalised brick displaying a name. These special bricks will feature now and into the future on a prominent wall in the new Wing of Sydney Children's Hospital, Randwick. There are only 1,000 bricks available, and they will be a colourful feature of the new building.

These distinctive pieces will add to the inclusive feel of the Clinical Services Wing and remind patients, staff and visitors of the community involvement in creating this fantastic facility.

For more information visit www.buildforkids.org.au



NB: some of the images on this page are artist's impressions





WHILE WE TRY TO
TEACH OUR CHILDREN
ALL ABOUT LIFE,
OUR CHILDREN TEACH
US WHAT LIFE IS
ALL ABOUT

JARVIS' STORY

Jarvis was born with a heart and lung condition called PAPVD. It means the three year old is very susceptible to lung infections and bronchial conditions. He must take medication every day to control his condition and will undergo surgery next year which should hopefully mean he will no longer be so prone to infection.

JARVIS





HOW
YOUR
SUPPORT
HELPED



INFANT LUNG MACHINE

HOW YOUR SUPPORT HELPED

This machine represents breakthrough technology, allowing the Respiratory Team to measure lung function in children under the age of five. This will be a significant change to current testing as damage to children's lungs can occur very early on in life. The ability to measure their lung function will lead to a better understanding of how lung disease affects babies and young children, and enable the development of new treatments for our youngest patients.

The machine provides positive air pressure through a mask on the child's face which mimics taking a breath in; this together with a rapidly inflating blow up bladder on the chest and abdomen, blows up the child's lung and then squeezes the air out. This machine will enable

the team to assess new treatments for children with Cystic Fibrosis and other congenital lung conditions and abnormalities. It will also allow the Hospital to be part of international and national research networks for this field of child health.

The machine will be housed in the new Clinical Services Wing, which is currently under construction. The new Wing will provide a dedicated room, removed from busy activity to allow for a quiet environment for children to be tested. Turn to page 56 for more information on the exciting new Wing.



NGALA NANGA MAI PARENT PROGRAM

HOW YOUR SUPPORT HELPED

Established in June 2009, the Ngala Nanga Mai Parent Group is an innovative community health parent program which utilises art making as a tool for engagement and building confidence. The program aims to positively influence young Aboriginal parents and their families by providing educational and social networking opportunities and highly accessible health services.

As of early 2011, 31 women and 44 children were engaged with the program, with approximately 15-20 regularly attending each week. In most cases, nearly all of the children who have been involved in the program have benefited from early and intensive health assessments.

Since the program commenced, 13 young parents have engaged in education and five parents found employment with assistance from the program. One of the parents from the program is grateful for the

experiences and life lessons learnt, saying, "I now know, through the support of the many friends I have made at group and the staff that are now like family, that I can achieve anything I put my mind to."

The parent program is a leader of its kind and sets an example to communities across Australia. The program won the Innovation in Aboriginal Health Award in 2010 and has been a finalist for many other awards including NSW Health Awards, NSW Quality Awards and received Outstanding Achievement in Aboriginal and Torres Strait Islander Health.

Without the support of the community, this program would not be able to continue.

If you would like to find out more information on the Ngala Nanga Mai parent program or how you can get involved, call 02 9382 1188 or email info@schf.org.au



OUTREACH

HOW YOUR SUPPORT HELPED

Every year, approximately 1,000 patients across NSW and the ACT receive care from our Hospital's Outreach Service. Our Cancer, Neurology, Respiratory and Cardiology staff (to name a few of the many departments) all hold regular clinics in regional and rural centres to enable long-term patients to receive specialist care closer to their homes.

Our Cancer Service runs Outreach in all areas of NSW and the ACT – from Grafton in the North to as far west as Bourke and to Wagga Wagga in the South. The team also spends time in more populated areas such as Canberra, Campbelltown, Wollongong, Coffs Harbour and Port Macquarie.

The Cancer Service has two dedicated Outreach Clinical Nurse Coordinators who help the family to navigate their trips back and forth into Hospital by giving plans for their upcoming treatments, booking and arranging clinic, hospital and chemotherapy bookings and admissions, and also liaising with local paediatricians, GPs, community and palliative care services as well as conducting school and home visits.

As part of the Outreach service, the Nurses run four clinics a year with consultants in Armidale, Coffs Harbour, Canberra, Wagga Wagga and Campbelltown. In addition, they focus on education and support to all of the peripheral hospitals, which currently includes Canberra, Wollongong and Campbelltown.



Positive
KIDS

An initiative of Sydney Children's Hospital Randwick

CAMP GOODTIME

HOW YOUR SUPPORT HELPED

Positive Kids Camp Goodtime is the national camp designed for children and families living with HIV. Facilitated by the Paediatric HIV Service at Sydney Children's Hospital, the camp which is now in its 22nd year has come a long way since it began in 1990, when it welcomed three families - and now 150 people attend each year.

Like many areas of the Hospital, Positive Kids Camp Goodtime would not be possible without the support and assistance from our wonderful volunteers. Our volunteers are community minded people who are role models and significant contributors to the success of camp.

There are less than 100 HIV positive children in Australia and hence there is a high level of isolation experienced by these families. The demand for this camp is therefore high. Two smaller Positive Kids camps also welcome children from New Zealand to attend.

The Paediatric HIV Service is the only service of its kind in Australia and provides medical management, psychosocial support, research, consultation and education. No government funding is received for the camp; it relies solely on sponsorship, donations and fundraising events to co-ordinate the camp.

Following Camp Goodtime, a 14 year old participant said: "In terms of managing my HIV, the Camp is more important than my medicine". A parent attending for the first time explained the impact of the Camp on her three children: "It is as if a huge weight that they have been carrying for four years has lifted".

Without the support of the community, this program would not be able to continue.

If you would like to find out more information on Camp Goodtime or how you can get involved call 02 9382 1188 or email info@schf.org.au

OUR FELLOWSHIP PROGRAM

HOW YOUR SUPPORT HELPED

Sydney Children's Hospital Foundation's Fellowship Program plays an instrumental role in the success of our specialist doctors training for the future. By providing the highest possible standard of care to our young patients, it ensures research into the cause and treatment of childhood disease and illness continues.

As new treatments and cures continue to be developed, the Fellowship Program is stronger than ever. Last year alone we offered 16 paediatric Fellows the opportunity to further their professional development across 10 speciality areas.

Over the past 13 years we have seen a total of **237 Fellows across 32 areas** care for our children. This has meant that Sydney Children's Hospital, Randwick can continue to be a leader in paediatric health care. Over **\$28 million** has been invested into the Fellowship Program, all thanks to the commitment and support of the community.

Thank you to all our partners who generously funded the following Fellowships. Without the support of the community, this program would not be possible.

NEUROLOGY FELLOW
Dr Deepa Srinivasan

Sophie Cowin

DERMATOLOGY FELLOW
Dr Catherine McKay



HAEMATOLOGY / ONCOLOGY FELLOW
Dr Marion Mateos



PAIN AND PALLIATIVE CARE FELLOW
Dr Heather Burnett



NEUROLOGY FELLOW
Dr Shabeed Mohammed Chelakkadan
Allens Arthur Robinson

DERMATOLOGY FELLOW
Dr Hsien Chan



HAEMATOLOGY / ONCOLOGY FELLOW
Dr Karen Gomes



GENERAL SURGERY FELLOW
Dr Camille Wu



CARDIOLOGY FELLOW
Dr Rao Srinidhi Jayamangala Vasudeva



INTENSIVE CARE FELLOW
Dr Maria Dri



HAEMATOLOGY / ONCOLOGY FELLOW
Dr Adam Nelson



EMERGENCY FELLOW
Dr Tara Brown



CARDIOLOGY FELLOW
Dr Pankaj Gupta



COMMUNITY CHILD HEALTH FELLOW
Dr Nikola Morton



CHILD PROTECTION FELLOW
Dr Penny Tsovolos



EMERGENCY FELLOW
Dr Catherine Jackson



OUR YEAR AT A GLANCE

AUG

- The Diamond Event held at the ivy raised an astonishing \$150,000 in its second year!
- The Hon. Jillian Skinner MP officially turned the sod for the Clinical Services Wing at the Hospital, marking the start of construction for this exciting new building



OCT

- We cheered on our amazing runners in the Blackmores Running Festival - the team collectively raised \$90,000!
- Guests feasted their eyes on unique designer bags at The Bag Lunch fundraiser held at the remarkable Kirribilli House



- We said thank you to our loyal volunteers by hosting a special celebration for them, including a tour of the Hospital
- Raising \$100,000 for Surgery, Bondi Vet Dr Chris Brown & Network Ten Newsreader Natarsha Belling hosted our summer cocktail party - SunSCHine - at Nielsen Park

DEC



- Happy anniversary to the 21 donors who made a donation in January and have been supporting the Hospital for over 10 years

FEB



MAR

- Sold a record number of 650 coffees at Star Café this month

APR



- The Lewis Foundation committed \$500,000 in support of the Child Protection Unit in the new Wing
- We welcomed 214 new donors who made their first donation to the Hospital

- This year's Gold Week Telethon was the biggest yet, raising \$2.61 million for the Hospital
- In its 15th year, Gold Dinner raised an impressive \$1 million for the Mental Health Unit in the new Clinical Services Wing
- Over 60 Corporate Volunteers took their suits off for the day to turn the Hospital Gold for Gold Week Telethon

- We celebrated the success of the Gold Week Telethon 2011 by hosting thank you drinks at the Swissotel Sydney
- Chicken burgers were the most popular choice for lunch in July with the Star Café selling a record number of 200 burgers in 1 week!



- Louis Vuitton came onboard as the inaugural Major Partner of our Hospital Art Program, commencing with the participation in the 'Fold with Love' origami art exhibition. Staff helped fold 1,000 paper cranes with two artists - the result was magical!

- Over 500 enthusiastic guests attended Amber Affair, our annual boutique beer tasting evening
- 70 associates from BIG W toured the Hospital for the annual BIG W Big Heart Day, in celebration of our long-standing partnership



NOV

- Merry Christmas! Our 2nd annual Little Lights Christmas campaign raised over \$127,000 with over 675 little lights purchased online and 15,000 emails sent to supporters
- Coles Cares for Kids Christmas campaign raised \$138,000 for our Cancer Centre through a highly successful in-store raffle



JAN

- 5 of Merivale's top chefs came together to feed 350 hungry Silver Party guests and helped raise \$300,000 for the Emergency Department



- Biggest Loser star trainer Shannon Ponton was the celebrity guest at the Hospital's Graduation Ceremony where 10 kids officially 'graduated', transitioning from the Children's Hospital to adult care



MAY



JUN



HALL OF CHAMPIONS

HALL OF CHAMPIONS

Our Hall of Champions are a very special part of our Hospital family. They are our greatest supporters, who have generously donated over \$1 million to the Hospital. Thank you.

These inspiring supporters are proudly recognised in our Hospital foyer. This year we welcomed two new Champions into the Hall: The Nine Network and The Steven Walter Children's Cancer Foundation.

Allens < Linklaters

BIGW



coles



DAVID & MICHELLE COE



MACQUARIE PUBLICATIONS PTY LTD AND THE ARMATI FAMILY



THE LESLIE STEVENS FUND FOR NEWBORN CARE

THE TURNBULL FAMILY



Westfield



OUR PARTNERS

**THANK YOU TO OUR MAJOR SUPPORTERS WHO MAKE AN
INCREDIBLE DIFFERENCE EVERY DAY TO OUR HOSPITAL.
THANK YOU FOR BEING A CHAMPION FOR OUR CHILDREN.**



PLATINUM

ARN
Grain Creative
Greek Young Matrons' Association
Macquarie Group Foundation
Rally for Recovery
South Sydney Junior R.L.C
Sydney Kids Committee



GOLD

Adshel
APN Outdoor
Australian Fund Managers Foundation
Australian Lions Childhood Cancer Research Foundation
Comedy for Kids
Eastgardens Pty Ltd
Elizabeth Beveridge
Fairfax
Goldman Sachs
Inprint
Jimmy Pozarik
Justin Milne, Anna Cicognani & Family
Kids for Life
King & Wood Mallesons
Lion
NBN
Nelune Foundation
Nicole Kidman & Keith Urban
Olbia & Tenix Group
Patricia McAlary
Peter & Stephanie Wainberg
Peter Wilson
Rio Tinto Services Pty Ltd
Southern Cross Austereo
St Spyridon Golf Day
The Fairbridge Foundation
Touched by Olivia Foundation
WIN TV
Xstrata Coal NSW



SILVER

4Tracks4Kids
Amalgamated Holdings Limited
Aussie
Australian Stockbrokers Foundation
Benny Wills Gala Dinner
Camp Quality
Carolyn Byrne Memorial Trust
Coogee Family Fun Day
FDC Melbourne Cup Luncheon
Frank Hadley Ltd
Group M
Gwynvill Group
Harvey Norman Holdings Ltd
Hoyts
Innez Hava
Israel Smith Photographers
Katherine & Michael Cowin
Louis Vuitton Australia Pty Ltd
Manildra Group
Myer Stores Community Fund
NAB Private Wealth
Newman's Own Foundation, Inc
News Limited
NewsLocal
Osmal Products Pty Ltd
Paspaley Pearlring Company Pty Ltd
Perpetual
Protrust Pty Ltd
Randwick Golf Club Associates
SNJ Pty Ltd



BRONZE

Southern Courier
Sunday Magazine
Sydney Front Runners
The Cornucopia Committee Inc
The Daily Telegraph
The Freedman Foundation
The Lewis Foundation Pty Ltd
Tour de Cure
Westfield Bondi Junction
Woolley Holdings

2GB
A Royale & Co Pty Ltd
A.N.G. Art Consulting
Abode Picture Hanging
ACCO Australia Pty Ltd
ACES
Adelaide Brighton
ARIA Catering
Athanase Yenibis Foundation
Australian Children's Music Foundation
Australian Turf Club
Bakers Delight
Bayview Boulevard Sydney
BBM Ltd
Bee Dee Golf Day
Bollinger
Bruce & Lauren Fink
Castellorizian Ladies Auxiliary
Child's Play Charity
Coogee Dolphin Sports Luncheon
Crust Gourmet Group
CVC Managers Pty Ltd
Daniel & Roma Finnigan
Double Bay Bowling Club
Duchen Family Foundations Pty Ltd
Etihad Airways
Fishing for Sick Kids
Fouress Foundation
Fred P Archer Charitable Trust
Geoff Grimish

Georgia Rocks
Gillie and Marc
Haritos Hotels
Haverick Meats
Helen Slater
Hoyts
Ian & Maggie Joye
ICAP Australia Pty Ltd
iGroup
Jack & Sharon Cowin
Jan Salisbury
Kobbers Kruises Klub
Levendí
Lifecyclists
M.A.C Cosmetics Australia & New Zealand
Maple-Brown Family Charitable Foundation
Marie Page
Maritime Union of Australia
Martha Matthews
Merivale
Mi9
Möet-Hennessy Australia
Naasstock IEM
Nick's Bar & Grill
Nova 96.9 & Smooth FM
Olivia Lambert Appeal
Optiver
Otto Ristorante
Pages Equipment
Peter's of Kensington

Philandron Foundation
Pilu at Freshwater
Pinpoint
Poppy Prior
Procure Cricket Challenge
Rizer Pty Ltd
Rob Johnston
Rostone Print
Rotary Club of Miranda
Royal Motor Yacht Club
Scott Martyn Charity Golf Day
Sovereign Hospitaller Order of Saint John of Jerusalem, Knights of Malta
Stedmans Hospitality
Summer Salt Restaurant
Sweet Digital
Tag Communications
Telstra
The Bathers' Pavilion
The Colour Agency
The Corio Foundation
The Country Trader
The Snap Royal Challenge
The Velez Family
The Victoria Room
Tony Bell
Vic's Meat
Virtual Offis
Vittoria Coffee
Willimbury Pty Ltd
World Travel Professionals



SUNSHINE GUARDIANS

Our Sunshine Guardians have chosen to leave a gift in their Will to Sydney Children's Hospital Foundation. We are honoured to acknowledge the following generous and inspirational supporters who have elected to make an investment in the health of future generations of children. Thank you for your commitment to the future of paediatric health.

Jack Frankham

Maria Whyte

Michele & Mario Topcic

Walter Ragg

Elke & David Powell



MANY THANKS

Thank you to everyone who donated \$500 and over for the 2011-2012 financial year. Your generosity helps us provide the best possible care for our brave young patients.

\$10,000+

A I Topper & Co Pty Ltd
Anderson, Don
Best & Less Pty Ltd
Botfield, Mary
Bottle Tower Investments
Burke, James
Carapiet, Helen
Comino, Chrissy
Comino, Katina
Davies Foundation
Dexus Property Group
Fell, Gordon
Freudenstein, Jane
Gialouris, Tia
Gresham Partners
Haritos, Steve
Howitt, Kate
I & B Perryman Oriental Carpets
Kaden Boriss
Knoblanche, Anne
Kone Elevators
Lane, Sara
Leckie, Skye
Link Market Services Ltd
Lolliland Pty Ltd
Lowy, David
Lyons, Brendan
Malouf, Ian
Mark Morffew Photography
Marriott, Robert
Model Co
Morrison, Peter
Multifile
Ockerby, Jason
Ord Minnett Group Limited
Ozsale
Peter's Meats
PMA Solutions
Raise a Smile Foundation
Ricky Richards (Sales) Pty Ltd
Roche, Dominic
Rotary Club of Rose Bay
Rothwell, Garry
Royal Motor Yacht Club of NSW Ltd
Sedlarevic, Tarik
Seven Network (Operations) Limited
Smithyman, Matthew
St Mark's Preschool (Cranbrook School)
Sydney FC
Szangolies, John

The Children's Help Foundation
The Loyal Foundation
The Star
Toys 'R' Us Australia Pty Ltd
Tribe Marketing
Uren, Paul
Walker, L
Warburton, Nikki
Winestock, Ron
Yip-Lomax, Frances
Zahra, Paul

\$5,000+

Airport Retail Enterprises
All State Shopfitting Pty Ltd
Ambra Corporation
Andrews, Peter
Angelos, Desma
Anka Darlinghurst Pty Ltd
APD Building Pty Ltd
Arcadia Pacific Group Pty Ltd
Artedomus
Atli Family
Ausgrid Employees' Children's Appeal
Barda, Walter
Bardwell Valley Associates
Bellevarde Constructions
Bickford, Ern
B'nai B'rith Bargain Bazaar
Booker, Andrew

Boyd, John
Brighton Australia Pty Ltd
Cadbruy, Lindsey
Canada Bay Club
Cantarella Bros Pty Ltd
Capital Investment Pty Ltd
Cass Brothers Pty Ltd
Cerrone Jewellers
Charity Greeting Cards
Chatelaine Quilters
Christou, George
Circuit Club Pty Ltd
CMC Music Pty Ltd
Collins, Dan
Commonwealth Bank Private
Dale, Brad
Debortoli, Darren
Dematic Pty Ltd
Dwyer, Donovan
Fairfax Holdings Pty Ltd
Falvo, Larissa
Fell, Malcolm & Kay
Finlayson, Adrian
Firmin, Michael
Fischer, Baydon
Fonterra Brands - Bega Cheese
Fraser Park Football Club
Freedman, Anthony
Georges River Lioness Club
Gregor, Stuart
Griggs, Rosalind

Grubb, Christophor
Hausmann, Judi
HMAS Watson
Hunter Hall International Charitable Trust
Hush Music Foundation
International Catering Equipment
Jaguar Australia
Jaycar Electronics
John Holland Group Pty Ltd
Karellas Group IGA
Karoubas, John
Keighery, Lisa
Lannelli, Carl
Lees, Andrew
Levy, Simone
Liangis Investments Pty Ltd
Lions Clubs District 201-N5
Liu, Lynette
Logicca Chartered Accountant
Lowy, Steven
Maher, Michael
MAK Enterprises Pty Ltd
Manindra Group
Mascot Police
McCulloch, Stuart
Milton Archer Pty Ltd
MLC
Moray & Agnew Lawyers
Nash, K

Limited
Synchro Marketing Australia Pty Ltd
Tabcorp
The Bill & Patricia Ritchie Foundation
The Carnegie Foundation Trust
The Medich Foundation
The Procure Group
Tianda Group Australia Pty Ltd
Travel The World Pty Ltd
UBS Australia Foundation Pty Ltd
Ultimo Tafe College
VGI Partners Pty Ltd
Vic's Premium Quality Meat
Waked, Morry
Webb & Parker Pty Ltd
Wells, Georgina
White, Rosemary
Winten Property Group
Woollahra Colleagues Rugby Union Football Club
Young, Angela

\$500+

101 Digital Photo
4 Cabling
A C Comino Lawyers

A N Restaurant
A R Management
Abbott Australasia Pty Ltd
Abdallah, Paul
Abernethy, John
Aboud, Anthony
Aboud, Lucinda
Aboud, Paul
ACE Vending, DP World Port Botany
ACP Magazines Ltd
Adam, Duncan
Adamson, F
Ahearne, Jennifer
Aitken, Elle
Aizenstros, Elon
Akary, George
Aku Property Group
Al Zahra College
Albert, David
Alberti, Diana
Alexandria Park Community School
Alfeldi, Kim
All Sorted Bookkeeping Solutions
Allanda Pty Ltd
Allfrey, Catherine
Allgrove, Anne-Marie
Allianz Australia Ltd
Allied Express Transport
Alsten, Margaret
Altman, Lisa

Alves De Miranda, Sheila
Alves, Stephanie
Amalgamated Holdings Ltd
Amodeo, Alan
Amor, Simon
Ampol Queanbeyan
Amputee Association of Sydney Incorporated
Anderson, Michael
Andreski, Bobby
Andrews, Angelique
Andrews, Joanne
Andrews, John
Andrews, Kerry
Andrews, Mary-Ann
Anseline, Phil
Antoniou, Peter
AON
Appin Mine
Arain, Michael
Arain, Takako
Arapidis, Diana
Aravopoulos, George
Arbib, Mark
Aretos, John
Aristides, Claire
Armati, John
Arnold, Michelle
Atkins, Matt
Atkinson, Lisbeth
Attard, Darren
Audi, Fred
Augimeri, Gioconda

Australian Automotive Group Pty Ltd
Automatic Pool Cleaners (Aust.)
Axient Pty Ltd
Bagus, Marielle
Baker & McKenzie
Baker, Alan
Baking Associations Of Australia
Ballot Family,
Banks, Andrew
Banksia Road Public School
Bankstown District Sports Club Limited
Barlow, Alina
Barlow, Robyn
Barlow, Scott
Barnes Family,
Barnes, Katie
Barr, Ellen
Barringer, David
Barry, Evelyn
Bartholomew, Sean
Bartholomew, Tracey
Bartier Perry Pty Ltd
Barwick, Suzanne
Baserite
Bass Electrical Engineering Pty Ltd
Bassis, Rachel
Bates, R
Battye, Fay

Bauer, Stephen
Bawelkiewicz, Konrad
Bayview Boulevard Sydney
Beard, Christine
Bechara, Jackie
Beer, Chris
Bell, Elizabeth
Bellotti, Carrie
Belrose Super Centa
Bendco Pty Ltd
Benjamin, Max
Berger, Simone
Bernasconi, Joy
Berry, L
Berry, Nicholas
Bertelle, Paul
Bertrand Export Co Pty Ltd
Best, Lynn
Betchoice
Bhandari, Dinesh
Bhardwaj, Ramesh
BHP Billiton Matched Giving Program
Bidvest Australia
Birties, Leigh
Birtles, Christina
Blainey North and Associated
Blakehurst Fitness Pty Ltd
Blaxland, Richard
Bloom, David
Boden Projects Pty Ltd
Bogota Coffee
Bokareva, Tatiana

Boland, Yasmin
Bolton, Craig
Bon, Mabigee
Bonde, F
Bondi Beach Public School
Bondi Big Paddle
Bondi Golf & Diggers Club Limited
Bondi Junction-Waverley RSLsub - Branch
Bondi Public School
Boog, Gillian
Booth, Geoff
Boothby, Paul
Boremore Directional Drilling Pty Ltd
Borrello, Anna
Bowlers Club of NSW
Boxall, Steve
Bracher, Peter
Bracken, Gillian
Break Free Finance
Bresic, Gilda
Breville Pty Ltd
Brewhouse Hotel Holdings Pty Ltd
Brice, Jim
Brierley, Ron
Briffa, Leonard
Brightstars Education Pty Ltd
Brindabella Plaster Linings
Brinker, Anthony
Briscoe, Philip

Britt, Mark	Byron, Jarred	(NSW) Ltd	Clovelly Public School	Cossman, E	Darvall, Belinda	Dougall, Suzanne	Ely, Beverley	Fitzmaurice, Paul	Gardner, Crispin	Gosford High School	Halliwell, Justin
Broken Hill Investments Pty Ltd	Cabarrus, Julian	Chadwick Models	Clubs NSW Eastern Zone Bear Cottage	Costi, Helen	Davidson High School	Doust, Kathleen	Emanuel, David	Flaherty, Jean	Garrad, Ally	Gosis, John	Ham Cafe
Brooks, Michelle	Cafe Casablanca	Chan, Victoria Elizabeth & Claire	Cottage	Country Women's Association of NSW	Davis Lighting	Dowling, Katie	Emms, Mike	Fleischer, Shelley	Gasan, David	Gotsoulias, Maria	Hanna, Cheryl
Broune Group Consultants Pty Ltd	Cahill, M	Chang, Frank	Cochiane, Trevor	Coupe, Christopher	Davis, Irene	Downes, Nicholas	Energize Health Club	Fleming, Angela	Gazal, David	Gowrie-Smith, Skye	Hannan, Meryl
Brown, Annalise	Calabria, Frances	Chang, Terence	Coelho, Joe	Coupland, Samuel	Davy, Dimity	Drimitriadis, Giant	Enersys Australia Pty Ltd	FlowConnect Pty Ltd	Gazal, Nora	Grab N Go	Hannon, Imogen
Brown, Cybele	Calidad Distributors Pty Ltd	Chang, Terence	Collage Boutique	Coutts, Alan	Dawson, Joanne	Drivas, Connie	Engadine High School	Foodies Deli Cafe	Geller, Eddie	Graham, James	Hansberry, Bob
Brown, Debbie	Calladine-Leimbach, Marley	Charamand, Rami	Collie, Judy	Cowin, Michael	DBC Hair & Beauty Supplies	Du Bois, Barry	Enthoven, Karen	Foppes, Dieter	Gensler, Robert	Graham, Wallis	Harbour Foundation
Brown, Jason	Callander, Ken	Charcoal Chicken Randwick	Collins, Gill	Cowper, Sally	De Angelis, Phillip	Duffell, Matthew	Epstein, Carole	Forster, Roger	Genua, Luigi	Granger, Kate	Hardiman, Ian
Brown, Kerri	Camare, Michael	Charley, Bob	Collopy, Jack	Crawford, Judy & Robin	De Maria, Lee	Duigan, Miranda	Era Polymers Pty Ltd	Foster, Brett	Geohegan, Dolores	Granite Tranformations Pty Limited	Harpur, T
Brown, Michelle	Camera, Vince	Chau, Kin	Colosimo, Peter	Creative Activation	De Saxe, Coleen	Dunn, Michael	Esler, Anne-Marie	Fowler, Amanda & John	George, Kara	Harrington Park Public School	Harris, Kieren
Brunker, Paul	Cameron, Ian	Check, Adam	Comins, Vicki	Creative Tours Pty Ltd	De Saxe, Marshal	Dunstone, Simon	Esmek, Ergun	Fowler, Glenn	German, Fancine & Ester	Grant, Alexander	Harrison, David
Brunton, Shaneene	Camilleri, Edward	Cheffirs, Brook	Conlon, Martin	Crichton, Dodie	Deague, Camilla	Duong, Ted	Espósito, Rita	Fowler, Peter	Get Fast Waste Bins	Grant, Cameron	Harrison, Ian
Brydens Law Office	Campbell, Ben	Chen, William & Lily	Connolly, Jonathan	Cronulla Beach Swimming School	Dean Giciano	Duxbury, Joe	Eternity Trading Pty Ltd	Fox, Michael	Ghuskie, Angus	Grant, Steve	Harry Meyn Foundation Ltd
BU Australia	Campbell, David	Cheung, Seine	Considine, Alexdora	Crust Gourmet Pizza Bar - Maroubra	Del Mar, Boris	Eales, Lara	Evans, Peter	Frakes, Jarod	Giakoumelos Family,	Gravina, John	Harry, Mark
Buchanon, Bruce	Canberra Painting Service	Cheung, L & S	Considine, Ally	Crust Gourmet Pizza Bar - Cronulla	Delany, Georgina	Earlwood Bardwell Park RSL Club	Ewers, Kent	Francis Pires Pty Ltd	Giannas, Angelo	Gray, James	Hart, Con
Buckley, Ben & Sarah	Cannon, Kate	Chifley Public School	Contender Sailcloth Pty Ltd	Crust Pizza Bonnyrigg	Delfendahl, Nicholas	Early Years @ UNSW	Express Glass 24 Hour Service Pty Ltd	Francis, Andrew	Giannone, Richard	Gray, Stewart	Hart, David
Buel Pty Ltd	Canterbury South Public School	Chouaifaity, Anne	Conway, Beverley	Crust Pizza Wagga Wagga	Dencol Transport	Easdown, Peter	Extinguished Fire	Francis, Sarkis	Giavis, Maria	Green, Louise	Hartigan, John
Bulluss, Frank	Cardona, Jennifer	Chow, Jessie	Coogee Minnows	Crust Pizza Wollongong	Detch Building Services Pty Ltd	East Hills Girls Technology High School	Falcon, Bruce	Frangos, George	Gibson, Janice	Green, Michelle	Harvey, Darren
Bunke, Graeme	Cards Only Pty Ltd	Christmas, Janie	Coogee Public School	Crust Pizza Wollongong	Dewhurst, Mark	Eastman, Catherine	Farah, Nicole	Franklin, Anthony	Gibson, Samuel	Green, Tessa	Hasserati, Suzie
Burg, Gary	Caredes, Angeliki	Christofi, Mia & Olivia	Cook, Anthony	Crust Pizza Wollongong	Devinnery, Timothy	Eastment, V	Farrer, Heather	Frazier, Gwen	Giles-Gidney, Gail	Greenacre Public School	Hawkins, Roderick
Burger, Mr & Mrs	Carlisle, Julia	Christofi, Stella	Cook, Benjamin	Crust Pizza Wollongong	Dewhurst, Mark	Eastlakes Public School	FDC Technologies & Mechanical Pty Ltd	Fretwell, Anthony	Gilmour, Digby	Greenaway, Simon	Healy, Mark
Burke, Dave	Carlton South Public School	Christou, Gus	Cook, David	Crust Pizza Wollongong	Dewhurst, Mark	Eastman, Catherine	Federer, Diane & Edward	Frew, Colin	Giltinan, James	Greenwood, Helen	Heaney, James
Burraneer Bay Public School	Carriol, Kirsten	City Finance Bankstown	Coolmore Australia	Crust Pizza Wollongong	Dewhurst, Mark	Eastment, V	Ferguson, Jayne	Fry, Natasha	Glue Store	Greenwood, Vinay	Heeley, Mark
Burrington, Janelle	Castelino, Sarah	City West Medical Centre	Coombes, Michael & Barbara	Crust Pizza Wollongong	Dewhurst, Mark	Eastment, V	Ferryman, Diane & Edward	Frykberg, Ian	Godber, Liane	Griffin, Craig	Hellenic Cultural Association
Burrod, Robin	Castle, Steve	Clark, Debbie	Cooper, Bruce	Crust Pizza Wollongong	Dewhurst, Mark	Eastment, V	Ferguson, Jayne	Fuda, Peter	Goldberg, Aubrey & Sharon	Griffin, Matt	Hennessy, Lucy
Burt, Alex	Castle, Steve	Clark, Geoffrey	Cooper, John	Crust Pizza Wollongong	Dewhurst, Mark	Eastment, V	Ferguson, Jayne	G H Walter Pty Limited	Goldberg, Lisa	Griffiths, Ben	Hennessy, Warren
Butt, Leanne	Catherine McAuley Westmead High School	Clark, Timothy	Cooper, Renata	Crust Pizza Wollongong	Dewhurst, Mark	Eastment, V	Ferguson, Jayne	Gabcon Holdings	Golledge, Ann	Grimsdale, Janet	Henry, Paul
Buttrose, Lizzie	Caughey, Jenny	Clarkson, Shelly	Cope, Gareth	Crust Pizza Wollongong	Dewhurst, Mark	Eastment, V	Ferguson, Jayne	Gadsby, Doreen	Good Shepherd Primary School	Grinberg, Reg	Henshall, Richard
Buys, Michael	CC Leather Rider	Clarry Anderson Sheet Metal Pty Ltd	Coppleson, Jade	Crust Pizza Wollongong	Dewhurst, Mark	Eastment, V	Ferguson, Jayne	Galbraith, Simon & Tabitha	Google Matching Gifts Program	Gutman, Karen	Herda, Georg
Byrne, Jeremy	Celarc, Alicia	Clegg, Alice	Corbett, Andrew	Crust Pizza Wollongong	Dewhurst, Mark	Eastment, V	Ferguson, Jayne	Gallagher Bassett Services Pty Ltd	Gordon, James	GyMEA Hotel	Heritage House Pennant Hills
Byron, David	Celermajer, D	Clemton Park Public School	Corbett, Brett	Crust Pizza Wollongong	Dewhurst, Mark	Eastment, V	Ferguson, Jayne	Gammer, Joshua	Gorman, Robert	Hager, Nikki	Childcare
	CGU Workers Compensation	Clifton Productions	Cosier, Christopher	Crust Pizza Wollongong	Dewhurst, Mark	Eastment, V	Ferguson, Jayne	Gardner Smith Group		Hakim, Claude	

Hewatt Earthworks Pty Ltd	Hughes, Craig	Inner West	Jameson, Philippa	Joye, Nicole	Fraternal	Lam, Amh-Dung	Liangrove Foundation Pty Ltd	Luk, Shirley	Marr, Rachel	McDowell, Alan	Middleton, Vanessa
Heydt, Kevin	Hughes, Michael	Insync	Jamieson, Peter	Julian, Suzanne	Kid U Not Pty Ltd	Lambert, Leanne	Libter, David	Luongo, Nicole	Marron, Suzanne	McEvoy, Jan	Miele, Michael
Hicksons Lawyers	Hughes, Reni	Internexus Financial Planning	Jane's Place Day Care	Kalina, Milan	Kimber, Cameron	Lambton High School	Lifestyle Fitness Australia	Luvisutto, Fredric	Marsh Pty Ltd	McEvoy-Vales, Keira	Mihalyka, Louis
Higgin, Libby	Hui, Nancy	Pty Ltd	Jasmins Lebanese Restaurant	Kalnins, Yanis	King, Matthew	Lanchester, Charles	Linda L Henry Botanic	Ly, Tracy	Marsh, Kristen	McGovern, Richard	Miladinovic, Mary
Hilford, Kylie	Huljich, Jason	Investec Bank (Australia) Ltd	Lakemba	Kaltoum, Sarah	King, Philip	Lanesbury, Natalie	Advisory Service	Ly, Van Tai	Marshall Foundation	McGowan, Susan	Miles, Brad
Hill Rogers Spencer Steer	Humphrey, Edward	Iorfino, Maria	Jasper, Jane	Kam, Benita	King, Sean	Langton, Davina	Linker, Fred	Lydaki, Maria	Marston, Roger	McGrath St George	Millett, Chris
Hillsdale Bowling & Recreation Club	Hunt, K	Ipkendanz, Diane	Jeffrey, Angela	Kambala High	Kirton, P	Lao, William	Linwar Securities	Lyon, Steven	Martin Fine Orthodontics	McHugh, Dennis	Millner, Thomas
Hinchcliffe, Rod	Huxbury & Associates	Irvine, Lauren	Jenkins, Scott	Kamphfner, Peter	Kiss, Thomas	Lara Jean Association Inc	Lionheart Offset Pty Ltd	Lyons, Michelle	Martin, Ben	McIntyre Property	Milperra Public School
Hindmarsh, Vicki	Huynh, Jayden	Isgro, Antonio	Jenneke, Randal	Karagounis, John	Klein, Asher	Larkin, Maryanne	Lions Club City of Ryde Inc	Macarthur, Meryll	Martin, Jeff	McIntyre, Colin	Mimosa Public School
Hockney, Mary	Hyder, Elton	Ishak, Amel	Jennings, Adam	Karam, Sam	Klein, Jason	Last, Timothy	Lions Club Of Charlestown	MacDonagh, Frank	Martino, Miguel	McKay, Duncan	Mir, Daizy
Hodgson, Stuart	Hyder, Matthew	Iskander, Simon	Jennings, Jenni & Michael	Karantonis, Angelo	Klunder, Kate	Lau, Josephine	Lions Club Of Crestwood	Macdonald, Greg	Martyn, Scott	McKenna, Fergus	Mirvac Projects Pty Ltd
Hofbauer, Rachelle	Ianni, James	Isles, Andrew	Jensen, Ian	Kargotich, Felicity	Knop, Gay	Laurence, Garry	Lions Club Of East Maitland	MacDonald, Kylie	Mary Cambell Pre School	McKenzie Group Consulting	Mirzikinian, Kristy
Hogan, Bob	Ibrahim, Laura	Isles, Douglas	Jim Bowen Pest Control	Karmis, Angela	Knox, Richard	Lawrenson, Kate	Lions Club of Engadine	Macedon Travel Pty Ltd	Masi, Paul	McKenzie, Ian	Mishor, Zevic
Hogan, Emma	Ice Design Pty Ltd	Isles, Margie	John Swire & Sons Pty Ltd	Karoll, Angus	Kominatos, Zoe	Laws, John	Lions Club Of Kogarah Inc	Maclnante, Eddie	Mason, Peter	McKenzie, Ian	Mistillis, Michael
Holben, Lisa	i-Dance Performing Arts	Isman, Jonathan	Johnson, Arthur	Kass, Tina	Kosovich, Natalie	Laws, Roxanne	Lipsian Brotherhood of NSW	MacKay, Catherine	Master Instruments Pty Ltd	McKeough, Murray	Mitchell, Judith
Holden, Frank	Studios	Ivany, Sharon	Johnson, Patrick	Kedwell, Lee	Kotsohilis, Styliani	Lawstop Pty Ltd	Lisarow High School	MacKillop Catholic College	Masters, Joanne	McLean, Kylie	MLC Community Foundation
Holden, Kimberley	Ierardo, Franco	J & G Excavations & Asphaltting	Johnston, Timothy	Kel.Co Real Estate Pty Ltd	Koutsogiannis, Eliana	Lazaris, Michelle	Litte, Gerry	Wakeley	Masterton, Jim	McLellan, Robert	MLC School
Holdsworth, Roger	Iffland, Criag	J & J O'Brien Pty Ltd	Jokocic, Vic	Keller, Amanda	Kozak, Stanley	Lederer, Robert	Little Kickers Central Coast	MacLean, Bill	Masyhur, Fakhurrozi	McLeod, Malcolm	Modern Art Framing Pty Ltd
Holgate, Stephen	Illawarra Coal Holdings Pty Ltd	J & J O'Brien Pty Ltd	Jones, Alan	Kelly, Peter	KPD Pty Ltd	Lederman, Margaret	Little Sails Preschool	MacPherson, Carol	Matrium Technologies Pty Ltd	McPherson, Belynda	Moelis and Company Australia Pty Ltd
Holzman, Manfred	Ltd	J & J O'Brien Pty Ltd	Jones, Andrew	Kelly, Zoe	Kring, Louise	Lee, Russell & Fiona	Live Productions Australia	Macryannis, Kristy	Mattick, Pam & Peter	McRae, Andrew	Molnar, Nicholas
Hordern, Chrissy	Incollingo, Gerry	J Bennett & Co P/L	Jones, Brendan	Kelman, Stuart	Krio Krush Basic Foods Pty Ltd	Lees, Andrew	Liverpool Nissan	Madsen, Michael	May, Stan	Medispa By Matty	Monaghan, David
Hornsby Heights Pre School	Independent Property Group	J C Travel	Jones, Michelle	Kemp & Co	Krspovic, Dusko	Leftakis, Maria	Living Social	Mainon Construction	Mayer, Gary	Meikle, Andrew	Mondo Kitchen
Hoskins, Chris	Foundation	J J Coleman Plumbing	Jones, Peter	Kendall, Dawn	KSA Truck Parts & Repairs Pty Ltd	Leighton Contractors	Livingstone Investments (NSW) Pty Ltd	Malamas, Katrina	McBride, Amy	Meklar, David & Jane	Monjed, Jeff
Hot Springs	InDesign Pty Ltd	JAAG Property Consultants	Jongsma, Naomi	Kennard, Prue	Kuch, Dean	Lemech, Catherine	Llambias, Ernest	Malek, R	McCaffery, Craig	Meneguzzi, Marco	Merrylands RSL Club Ltd
Houlihan, Luke	InDesign Pty Ltd	Jackman, A & N	Joo, Leok Lin	Kennedy, Anne	Kucukalic, Emily	Lenehan, Craig	Lloyd, George	Malone, Andrew	McCaffrey, Lauren	Merrylands RSL Club Ltd	Monkcom, E
Howard, Megan	Info Salons Group	Jackson, Mark & Abigail	Jordan, Stuart	Kennedy, Laurence	Kwok, Bernard	Lennon, Mike	Lock, Ronald	Maloney, Lesley	McCarron, Gary	Mesley, John	Moon, Steve
Howard, Paul	Ingersoll, Juliet	Jacob, Joumana	Jorritsma, Karen	Kennedy, Monica	Kyrenia Travel Pty Ltd	Leo, Glenn	Lock, Sally	Mandaliti, Lisa	McCluskey, Amanda	Meuhold, Rhonda	Moore, Malcolm
Hoyts Head Office	Ingham, Simone	Jacobs, David	Joseph, Kate	Kertesz, Kim	Kyriakou, Phoebe	Leong, Daniel	Longes, Richard	Manettas, Kathy	McCormack, Caitlin	MH Carnegie & Co Pty Ltd	Moore, Michael
HRIS Health Support Services	Ingham, Sue	Jacobs, Frank	Jovanov, Steve	Kiama District Ministers'	Lacorium Health	Lester, Warrick	Longes, Sarah	Manken, Julia	McCredie, David	Micador Australia Pty Ltd	Moore, Robert
Hu, Pei-Yi	Inner Wheel Club of Balmain Inc	Jade Pools Pty Ltd	Joyce, Marion	Joyce, Owen & Emma	International Pty Ltd	Levitt, Sasha	Lovatt Transport	Manners, Anita	McCubben, Glenn	Microwave Safety Systems	Moorefield Bowling Club
Huggies Australia	Inner Wheel Club of Sydney -	Jagot, Simon	Joyce, Maggie	Joye, Maggie	Laing, Sacha	Lewis, David	Lucas Heights Community	Mansfield, John	McCubben, Susan	Middleton, Charlotte	Moorefield Girls High School
Hughes, Andrew	James, Mel	James, Mel	Joyce, Maggie	Joye, Maggie	Lajdes, Diana	Ley, Craig	Lucas Heights Community School	Marr, Michael	McCulloch, Cheryl	Middleton, Hugh	Moraitis, Paul
							Lucas, Michael		McDonald, Pamela		Moran, John

Moran, Yvette	Nesbitt, Emma	Offis Pty Ltd	Paroulakis, Harley	Potts, Michael	Reach Local Australia	Roofing Supermarket	Sanders, David	Sharp, Carol	Smolenski, Bogufia	Stiel, Jo	T Rowe Price
Morffew Photos	New View Window And Door Installations	O'Keefe, Andrew	Parry, Naomi	Poulos, Lisa	Reddam House Ltd	Rooney, Kristen	Sanderson, Jemma	Sharpe, Joanne	Sorrenti, Kate	STO Pty Ltd	Tang, Candy
Morgan & Cooper Families,	Newington College - Wyvern House	Oleks, Mark	Parsons, Kate	Powell, David	Redmond Company Pty Ltd	Rose, Michael	Sands, Lee	Shaw, Matthew	SOS Printing Group Pty Ltd	Stocks, Jacqueline	Tanner, Andrew
Morgan, Glenn	Newman, Jason	On Site Labour Hire Sydney Pty Ltd	Pascal Press	Powney, Renee	Reece Plumbing Centres	Rosebery Hotel	Santos, Melanie	Shea, Peter	South Sydney High School	Stoff, Chris	Tannous, Paul
Morgan, Neville	Newton, Oliver	One Six Nine Cafe	Pasciuto, Mario	Prasad, Natasha	Reed Family,	Rosen, Lisa	Savage, Daniel	Sheahan, Brian	Southcott, Bill	Stone, Andrew	Tannous, Tony
Moriah College	Ng, Sylvia	Orbit Protection Management Services	Pastrello, Luisa	Prassas, Mahi	Reeve, Peter	Roseville College	Sawyer, Rohan	Sheffield, Nicole	Spanos Waterproofing Pty Ltd	Stone, Owain	Taouk, Joe
Morris, Colleen	Ngoc, Duong	O'Sullivan, Aaron	Patterson, Anthony	Pratten, Tanya	Reeves, David	Ross Equipment Australia P/L	Scali, Yvonne	Shelmerdine, David & Maree	Speed Petroleum	Stone, Philippa	Taouk, Louie
Morris, Matthew	Nicholas, Samuel	O'Sullivan, Antony	Pattison, Ron	Premium Beverages	Regupol (Aust) Pty Ltd	Ross, Linda	SCH Senior Medical Staff Council	Shelmerdine, Tom	Speer, Vanessa	Stott, Carolyn	Taranto, Samantha
Morrison, Kerry	Nicholl, Peta	O'Sullivan, Gary	Peabody Energy	Project Control Group	Reich, Thomas	Ross, Vic	Schall, Jenifer	Shemesian, Richard	Spice, Wayne	Stracey, Bruce	Target Australia Pty Ltd
Mortel, Allan	Nicholls, Brian	O'Sullivan, Tony	Peacock St Long Day Care	Pronto Building & Landscape	Reid, Jeremy	Rotary Club of Canberra	Schell, Anna	Shine Australia	Spiteri, Frank	Stromberg, James	Tate, Angela
Mortimer, Glen	Nick Harkness Pty Ltd	O'Sullivan, Gary	Peacock, Amy	Provan, Wayne	Reidy, Geoff	Rotary Club of Goulburn Mulwaree	Schlipper, Ryan	Shmith, David	Sportingbet Australia Pty Ltd	Strong, Mark	Taylor, Campbell
Moses, David	Nijhawan, Sanjay	O'Sullivan, Tony	Pear Tree House	Pryor, Rodney	Reidy, Helen	Rothchild, K	Schofield, Brett	Shore School	St Catherine's School	Stubbs, Matthew	Taylor, Deborah
Moss, James	Nikolich, R	Our Lady of Fatima Primary School	Penfold-Russell, Rebel	Psaltis, H	Reinecker, Alan	Rothwell	Schwamberg-Kaljo, Terry	Short, Ally	St George Leagues Old Time Dance Club	Stylecraft	Taylor, Graham
Moufarrige, Fern	Nilac Family Trust	Our Lady of Lebanon College	Perara Pty Ltd	Pulset Pty Ltd	Revolver	Rothwell, Georgina	Scott Murphy, Vicki	Shrimpton, Nicole	St Geoarges Charitable Association	Subramaniam, Lalitha	Taylor, Jennifer
Moujalli, Joseph	Nippon Oil Australia	Oxley Timber Co	Perhauz, Mary-Ellen	Purcell, James	Reynolds, Marianne	Rothwell, James	Scundi, Leonardo	Shrubsole, Damian	St Mary's Year 12 2011	Suffolk Vale + Co	Taylor, Mitchell
Moyle, Helen	No Bull Training	Ozgen, Ercan	Peridis, Anthony	QBE Insurance Pty Ltd	Riad, Rochelle	Rothwell, Siobhan	Seal N Proof Pty Ltd	Shrubsole, Martine	Sullivan, Cynthia	Sukkar, Josephine	Taylor, Paul
Murnaghan, Angus	Nochar, Morag	Oztent Aust Pty Ltd	Perrett, Jacqueline	Quin, Stuart	Rich, Maxine	Rothwell, Siobhan	Seal N Proof Pty Ltd	Signkiosk.com Pty Ltd	Sullivan, Susan	Sunder, Stephen	Teach and Play
Murphy, Emma	Norgard, Therese	Page, Dianne	Pesic, Kathryn	Rabotnicoff, Monica	Richards, John	Rufle, Frank	Sefiani, Robyn	Sir Asher And Lady Joel Foundation	Suncorp GIO	Suncorp Group	Teasdale, Amelia
Murphy, John	Norris, Valarie	Pagewood Botany Football Club	Pethydiridge, Caprice	Racing NSW	Ridhalgh, Lachlan	Rugrunna Pty Ltd	Selwyn, Andrew	Simonsen, Linda	Suncorp GIO	Sunder, Stephen	Tebble, Roslyn
Murphy, Lisette	North Bondi Nippers	Palin, Carmel	Philips, Joan	Radcliffe, Ben	Riley, Mark	Runden, Michelle	Seo, Daniel	St Patrick's College	Sutherland	Sunder, Stephen	Tennis Sydney Inc
MW Civil Engineering & Construction Pty Ltd	Northmead High School	Pan-Koakos Association of NSW	Philp, Gordon	Radzyminski, Galoriel	RJ Workspace	Russell, Marcia	Sergeant, Brett	St Patrick's College	St Paul's High School	Sunshades Eyewear	Teodorowski, Patrick
Myer Stores Community Fund	NRMA - Claims Department	Panselinos, Konnor	Pike, Anne	Rafaletos, John	Rafaleto's Zanuttini Pty Ltd	Rutsch, Kerrie	Sevaan Group Pty Ltd	Sutherland	St Paul's High School	Sunshades Eyewear	Teodorowski, Patrick
Nalebirch Partitions Pty Ltd	Parramatta	Papa Joes Bakehouse	Piltz, John	Rafaletos, John	Rafaletos Zanuttini Pty Ltd	Ryan, Sally	Seven Consulting Pty Ltd	Sutherland	St Paul's High School	Sunshades Eyewear	Teodorowski, Patrick
Narara Valley High School	Parramatta	Papa Joes Bakehouse	Pine, Shaun	Rafaletos, John	Rafaletos Zanuttini Pty Ltd	Roberts, Andrea	Sevaan Group Pty Ltd	Sutherland	St Paul's High School	Sunshades Eyewear	Teodorowski, Patrick
Narwee Public School	Parramatta	Papa Joes Bakehouse	Pitchley, Karen	Ramplin, John	Ramplin, John	Roberts, Kristy	Sevaan Group Pty Ltd	Sutherland	St Paul's High School	Sunshades Eyewear	Teodorowski, Patrick
Nascent Group	Parramatta	Papa Joes Bakehouse	Pizem, Wolfie	Ramsgate RSL Ladies Social Club	Ramsgate RSL Ladies Social Club	Roberts, Peter	Sevaan Group Pty Ltd	Sutherland	St Paul's High School	Sunshades Eyewear	Teodorowski, Patrick
Nash, Carey	Parramatta	Papa Joes Bakehouse	Poli, Danielle	Ramsgate RSL Ladies Social Club	Ramsgate RSL Ladies Social Club	Robins, Penny	Sevaan Group Pty Ltd	Sutherland	St Paul's High School	Sunshades Eyewear	Teodorowski, Patrick
Nauer, Willy	Parramatta	Papa Joes Bakehouse	Politi, Kerrie	Ramsgate RSL Ladies Social Club	Ramsgate RSL Ladies Social Club	Robins, W	Sevaan Group Pty Ltd	Sutherland	St Paul's High School	Sunshades Eyewear	Teodorowski, Patrick
Nazar, Rebecca	Parramatta	Papa Joes Bakehouse	Pongrass, Leslie	Ramsgate RSL Ladies Social Club	Ramsgate RSL Ladies Social Club	Robinson International Pty Ltd	Sevaan Group Pty Ltd	Sutherland	St Paul's High School	Sunshades Eyewear	Teodorowski, Patrick
Negus, Warwick	Parramatta	Papa Joes Bakehouse	Poole, Scott	Ramsgate RSL Ladies Social Club	Ramsgate RSL Ladies Social Club	Rogan, Elizabeth	Sevaan Group Pty Ltd	Sutherland	St Paul's High School	Sunshades Eyewear	Teodorowski, Patrick
Nelson, Emelia	Parramatta	Papa Joes Bakehouse	Port Macquarie- Tacking Point Lions Club	Ranvet Pty Ltd	Ranvet Pty Ltd	Rogers & Walker Removalists Pty Ltd	Sevaan Group Pty Ltd	Sutherland	St Paul's High School	Sunshades Eyewear	Teodorowski, Patrick
Nelson, Garry	Parramatta	Papa Joes Bakehouse	Porter, Toni	Ratcliffe, Peter	Ratcliffe, Peter	Romanov, Anatoli	Sevaan Group Pty Ltd	Sutherland	St Paul's High School	Sunshades Eyewear	Teodorowski, Patrick

The Brief Group Pty Ltd	Transfield Services (Australia) Pty Ltd	Van Haandel, Lisa	Ward, Truda
The Calderwood Cup		Van Munster, Robert	Warner, Beryl
The Catholic Club Limited	Trantalis, John	Van Onselen, Ainslie	Warners Bay High School
The Clock Hotel & Customers	Travel Phase Pty Ltd	Van Zwieten, Stephen	Warren, Elizabeth
The Daily Telegraph	Tregoning, Anthony	Vanderlouw, Willem	Waterhouse, Thomas
The Decor Corporation Pty Ltd	Trenaman, Gary	Vardis, George	Watkins, Bruce
The Gold Company	Trevelle Holdings Pty Ltd	Varley, Ken	Watson, Phil
The Helping Hands Club	Tridonic	Vass, Jodie	Watt, Darren
The Jackson Foundation	Triple M Trading	Vaughan, Bruce	Watt, Robert
The King's School Prep	Trippe-Smith, Adam	Vella, Elizabeth	Waugh, Mitchell
The Michels Group	Trippe-Smith, Sophie	Venske, Mark	Waverley Council
The Myer Foundation	Trude, David	Vescio, Andrew	Webster, Roz
The R A Gale Foundation	Truly Madly Deeply	Vespa, Mark	Weinstein, Greg
The Running Company	Tsimnady, Hionia	Vidor, Jackie	Weir, Deanne
The Swimming Academy	Tsirbas, Amy	Vietnam Veterans Motorcycle Club	West, Colin
The Travel Corporation Pty Ltd	Tuck, Colin	Vision Homes	Westpac Group
Thomas, Rob	Tudehope, Meg	Volk, Gerard	Whereat, Margaret
Thompson, Amanda	Tuesday Senior Bowls Club	Waddington, Richard	Whitby, Jennifer
Thompson, Lennard	Tuovinen, R	Waldren, Mark & Alex	White, Dean
Threfall, Alex	Turnbull, Ann & Richard	Wales, E	White, Mark
Tibra Capital Foundation	Turnbull, Daryl	Walford, Nicholas	White, Paul
Tomanovits, Ingrid	Turnbull, Jo	Walker, Chad	White, Robert
Tompson, Craig	Turnbull, Luca	Walker, Christopher	Whiteman, John
Tonna, Peter	Turnbull, Lucy	Walker, Sheena	Whiteman, Roger
Toohey, William	Turner, Stephen	Walker, Suzanne	Whitten, Malcolm
Torstar Communications	Tzaneros, Arthur	Wallace, Julia	Whittle, David
Town Centre Pty Ltd	Tzaneros, Maude	Wallace, Rob	Whyte & Co Pty Ltd
Townhouse International	UBS AG Australia	Walleroo Pty Ltd	Wiles, Richard
Townsend, Richard	Uematsu, Ryuji	Wallis, Greg	Wilf Mula
Trackmaster Apparel Pty Ltd	United Way	Walsh, Michelle	Wilkenfeld, David
Tradesco	Universal Health	Walsh's Village Pharmacy	William Cole Funerals Pty Ltd
Trahair, V	V J Ray Pty Ltd	Wannabees Play Town	Williams Electrical

Zhao, Dong
Zolotas, John
Zucconi, Robert

GIFTS IN KIND

Thank you to those who generously provided us gifts and services in kind last year. The donation of services such as graphic design, printing, catering, event production, and goods for prizes and other purposes is vital to our success. If you would like to make a donation of goods or services in kind, please call (02) 9382 1188 or email info@schf.org.au

1300 BigFish
Acqua Panna
Activision Blizzard
Airbrushing Around
Akin
Al Weekes
Amber Lawrence
Amber Sherlock
ANG Art Consulting
Asyana Natural Sunless Tan
Audi Australia
Bassike
Beachmour

Behind the Bash Catering
Blue Tongue
Brendan Jones
Breville
Brittany Bloomer
BWM
Cadrys
Camilla
Camilla and Marc
Canterbury BMW
Carnival Australia
Centrum Printing
Chas Clarkson
Chris Brown
Deborah Knight
Décor of Distinction
Deus Ex Machina Motorcycles Pty Ltd
Digital Press
Dominic Lonergan Photography
Dr Roebuck's
Dr William Mooney
Easysigns
Eat Media
Elise Garland Public Relations
Estee Lauder
Etihad Airways
Event Cinemas Bondi Junction
Event Group Australia
Event Signs
Excellent Laundry Services
FDC Construction & Fitout

Flashback Photoboosths Pty Ltd
Fleur Wood
Grace Fine Art
Hayman Great Barrier Reef
Hugos Lounge
James Barnett
Jaynie Seal
JimJam
Kathryn Robinson
K.W. Doggett Fine Paper
Katering
Love from Venus
Maclaran Vale
Macquarie Radio Network
Magdalena Photography
MAK Catering
Mambo
Mandalay Flowers
Marianci Baba
Marquise
Melissa Overman
Michaela Skovranova
Mildren Corporate and Events
Mimco
Miss Bella Swimwear
Mr. Cook
Natarsha Belling
Olivia Morgan
Paddy's Meats
Patio by Jamie Dury
Peter Overton
PrinterWorks

Production Technologies
Qantas Airways Ltd
Rekorderlig Cider
Riverlands Polo Club
Roses Only
Ryan Donnelly
Samantha Gale
Sambag
Sass & Bide
Smartset Photography
Splendid Communications
Stapleton's Quality Meats
Style and Image Creatives
Suboo
Sydney Seaplanes Pty Ltd
Tealily Photography
The Bellevue Hotel
Tim Gilbert
V8 Supercars Australia Pty Ltd
Vandoros Imports Pty Ltd
Vranken- Pommery Australia Pty Ltd
Waverley Bus Depot State Transit Authority of NSW
Wilkinson, Lisa
WINK
XYZ Networks Pty Ltd

COMMUNITY FUNDRAISERS

Thank you to all our community fundraisers – you

are wonderful advocates for our Hospital. Community fundraisers host events such as cake stalls, charity dinners, golf days or participate in Fun Runs or other challenges to raise funds for our brave young patients. To find out how you can raise funds for us, please call (02) 9382 1188 or email events@schf.org.au

10kg Chocolate Raffle - Isabel Holtz
Adams, Anastasia
Adrian Finlayson's Melbourne Ironman
Al Amanah College
Alan McGovern's Raffle
Alexander Atkinson Fundraising Page
Alexandria Park Community School
All Saints Grammar School
All Sorted Bookkeeping Trivia Night
All Sorts Fitness
All Star Early Learners
Appin Mine
Atkinson, Simon
Atlis Country Pharmacy
Azoulay, Hanna
Bank of America Merrill Lynch

Barham, Naomi
Barrett, Natalie
Beaumont, Kylie
Beck and Jemma, Run4Fun
Bell, Tony
Bellevue Hill Public School
Belrose SupaCenta Wishing Well
Bentley, Leanne
Billich Art Gallery
Birger, Adam
Blackwell, Aaron
Blond, Cassandra
Bondi Big Paddle
Botfield, Mary
Bowlers' Club At 99 On York
Bowlers Club at 99onYork Melbourne Cup Fundraiser
Boxing Night Challenge
Break Thru People Solutions Fundraiser
Bultitude, Brittany
Bultitude, Stephanie
Burgess, Margaret
Burns, Kellie
C1North, SCH
Calabria, Frances
Canturi, Robert
Carey, Brittney
Caringbah High School
Mufti Day
Caroline Proud's Bondi Market Stall

Cass Brothers Christmas Fundraiser
Charlie's Thank you to Sydney Children's, Run4Fun
Chartres, Adrienne
Chow, Alex
Christmas in July - Jay Rodney
Circuit Club screening of Senna
Cook, Claire
Craig, Danae
Cronulla High School
Crust Pizza - Merrylands & Parramatta
Crust Pizza Alexandria
Crust Pizza Concord
Cullen, Alexander
Davies, Nicola
Dempsey, Louise
Devinnery, Timothy
Dixon, Michael
Double Bay Women's Bowling Club Charity
Bowling Day
Dunn, Michael
Edmonds And Greer, Oatley
Element14
Elliott, Paul
Encenarial, Jaime
Engadine Public School
Engin's Fundraising Page

City2Surf	for SCHkids	Mccrea, Vicki	Powell, Ian	St Josephs Primary School
Eric Ozgen's Head Shave Fundraiser	JJ O'Brien Annual Christmas Breakfast	Mchugh, Chris	Pumpkin Long Day Care Centre	Steele, Michael
Frances Yip Fundraising Concert	Joseph Maujalli's Drumming Event World Record	Mhairi McClymont, Run4Fun	Ramsgate Memorial RSL Club	Stephen, Ashleigh
Georgia Wyrdean Hair Shaving Fundraising Page	Attempt	Miller, Paul	Ratnayake, Nilu	Subotic, Tana
Good Shepherd Primary Plumpton	King, Christopher	Mitchell, Richard	Reach Local Australia Family Fun Day	Sydney FC Game Day
Goodstart Early Learning Centre	Kirsty Macryannis' Charity Night	Money, Julie	Reddam House Gala Dinner	Taylor, Jennifer
Graham, Justin	KONE Golf Day	Monkey Mania	Renown United League Lunch	Team Daly
Grimmond, Sean	KONER Golf Day	Moore, Fiona	Revesby Workers Club	Ted Duong's Golf Day
Hair by Kris Head Shave & Patient Parent Day Out	KONER Golf Day	Moorefield Bowling Club Tournament	Fundraiser Skydive	Tennis Sydney Inc - Tennis Tournament
Harrys Honour's, Run4Fun	KONER Golf Day	Morriss, Marc	Mother's Group Fundraiser	The Footy Show
Hassall, Danielle	KONER Golf Day	Mother's Group Fundraiser	Movie Night in memory of Gabrielle Botfield	The Gold Company Fashion Parade
Hayward, Rob	KONER Golf Day	Movie Night in memory of Gabrielle Botfield	Noel Smetanig, Bondi to Bronte Ocean Swim 2011	The Party People
Hender, Jenny	KONER Golf Day	Movie Night in memory of Gabrielle Botfield	North Bondi Nippers	The Ruff Diamond Children's Hospital Epic
Herc and John Vs. Mt Kilimanjaro	KONER Golf Day	Movie Night in memory of Gabrielle Botfield	Northmead Creative And Performing Arts High School	Titan Fitness - Kiama Carols
HMAS Watson	KONER Golf Day	Movie Night in memory of Gabrielle Botfield	NRMA	Trenaman, Gary
Holland, Shereen	KONER Golf Day	Movie Night in memory of Gabrielle Botfield	Park Beachside - Ball Game at Maroubra Beach Touch Tournament	Trevor Cochrane, Christmas Lights Fundraiser
Hornsby Heights Pre School Kindergarten	KONER Golf Day	Movie Night in memory of Gabrielle Botfield	Park Beachside - Ball Game at Maroubra Beach Touch Tournament	Ultimate Boating Magazine Event
Ian Prentice Fundraising Page	KONER Golf Day	Movie Night in memory of Gabrielle Botfield	Park Beachside - Ball Game at Maroubra Beach Touch Tournament	Van Der Merwe, Thomas
Igor Maa Academy - Grapple For Life	KONER Golf Day	Movie Night in memory of Gabrielle Botfield	Park Beachside - Ball Game at Maroubra Beach Touch Tournament	Varnier, Gabi
Info Salons Fundraising Page	KONER Golf Day	Movie Night in memory of Gabrielle Botfield	Park Beachside - Ball Game at Maroubra Beach Touch Tournament	Vietnam Veterans Motorcycle Club
Ingle, Jared	KONER Golf Day	Movie Night in memory of Gabrielle Botfield	Park Beachside - Ball Game at Maroubra Beach Touch Tournament	Walk from Helensburgh to Wollongong
James Ruse Agricultural High School	KONER Golf Day	Movie Night in memory of Gabrielle Botfield	Park Beachside - Ball Game at Maroubra Beach Touch Tournament	Walker, Deanne
Jayden Huynh - Ride 5 Alive	KONER Golf Day	Movie Night in memory of Gabrielle Botfield	Park Beachside - Ball Game at Maroubra Beach Touch Tournament	Wannabees Family Play Town

Willow Cottage Early Learning Centre
Write - a - Book - in - a - Day
Wulff, Lara
Wyer, Denise
Zur, Nicholas

HOSPITAL HEROES

Hospital Heroes are a special group of people who make ongoing automatic monthly donations to help all our young patients grow up happy and healthy. Thank you, we think you're amazing! To join our Hospital Heroes, please call (02) 9382 1188 or email regular@schf.org.au

Abdy, Mathew
Adams, Nicola
Aking, Akuc
Allmark, Alison
Anderson, Desiree
Anderson, Sally
Anthony, Glenn
Aravanis, Labrina
Atherton, Margaret
Augimeri, Gioconda
Bader, Gaith

Bartlett, Gordon
Bayari, I
Bell, Michael
Beniac, Jane
Bennett, Dean
Birrell, Dallyn
Bogoevski, Michael
Bonde, F
Bonney, David
Braathen, Michael
Breden, Gregory
Brennan, Yasmin
Brown, Barry
Bryant, Andrea
Buckton, Rochelle
Campbell, Frank
Carlsen, Lee
Carson, S
Carter, Ian & Liz
Catt, Melissa
Chandra, Aruna
Charles, Lisa
Chew, Anne
Coleman, Laurie
Conway, Beverley
Cope, Gareth
Crawford, Matthew
Daniel, Lyudmyla
Daniel, Steve
Darwon, Vivienne
Davies, Joan
Devine, Diane
Dimauro, Anthony

Doumit, Suzie
Druce, Jonathon
Du, Cameron & Christopher
Eisho, Salman
English, Laurie-Ann
Esler, Anne-Marie
Eve-MacLeod, Simon
Fenwick, Ian
Fitzmaurice, Paul
Foo, Seng Chuan
Fraser, Barbi
Gibb, Warren
Glen, Samuel
Godber, Liane
Grove, Pat
Hall, Laura
Hensley, Lisa
Hibble, Narelle
Hicks, Katrina
Hudson, Harry
Ichikowitz, Rozanne
Ip Family
Ireland, Terrence
Jack, George
Jennings, Adam
Jory, William
Kaudeer, Gerard
Kennedy, Laurence
Lam, Joe
Lambert, Craig
Lau Family
Law, Wharton
Lawrence, George

Lemech, Catherine
Levin, Lauren
Lifschitz, Stan
Links, Aaron
Lorusso, Vince
Low, Robert
Madden, John
Magid, Ruth
Mason, Wendy
McAreer, Laura
Mortel, Allan
Mumford, Mervyn
Nery, Neil
Nicholas, Geoff
Nicholls, Brian
Nobrega, A
O'Brien, Kristy
Opacic, Danny
Palin, John
Park, M
Patamanont, Chaovalit
Peter, Gregory
Philips, Joan
Pires, Francis
Pons, Cheyne
Potter, Helen
Pursell, Rosemarie
Ray, Binayak
Reinke, Paul
Robins, Penny
Robinson, Janette
Rogers, John
Rouvray, Sandra

Ruxton, Cirelle
Samaha, Jamie
Sassen, Rima
Schubert, Suzanne
Schultheiss, Karin
Sherriff, Jackie
Sims, Greg
Sloneker, Robert
Smith, V
Spierling, Peter
Spies, Danielle
Spitzer, Rachel
Stevens, Sydney
Sundercombe, Robert
Tamhane, Dilip
Tan, Chui Sze
Taylor, Keith
Topcic, Michele
Vanderlouw, Willem
Wallace, Bruce
Wallis, Mark
Watkins, Bruce
Watson, Patricia
Wigley, Michael
Wilkinson, Margaret
Williams, Kim
Williams, Matthew
Williams, Peter
Yeom, Ji Won
Zha, Huanhuan

WORKPLACE GIVERS

Our Workplace Giving Program allows employees to regularly donate directly from their pre-tax pay to Sydney Children's Hospital through their employer's automated payroll system. Each regular contribution adds up to make a BIG difference to the little lives of sick children and their families. Thank you for your support! To join our Workplace Giving Program, please call (02) 9382 1188 or email giving@schf.org.au

Abbott Australasia Pty Ltd
Allens
Amalgamated Holdings Ltd
AMP Foundation
APRA
C Town Catholic Club
CAF Community Fund Australia
Fairfax Holdings Pty Ltd
Freehills
Goldman Sachs and Partners
HRIS Health Support Services
Investec Bank (Australia) Ltd
King and Wood Mallesons
Lifeline Australia
Macquarie Group Foundation
Pascal Press

Property Secrets
T Rowe Price
The MGI Foundation
The Morgan & Cooper Families
United Way

IN CELEBRATION

Thank you to all the people who thoughtfully asked their family and friends to donate to the Hospital to help them celebrate an occasion last year. Your kindness was truly appreciated and your generosity helped to improve the lives of our brave young patients. To find out more about In Celebration Gifts, please call (02) 9382 1188 or email celebration@schf.org.au

Abrahams, Jacqueline
Ackerman, Joshua
Ang, Dylan
Angelos, Harry
Bader, Nadeem
Batt, Olivia
Bennet, Jane
Bergman, Russel
Berman, Vonny
Bloch, Devan

Bogoevski, Lara	Katz, Michelle	Roberts, Cooper
Boyarsky, Taryn	Keogh, John	Rogers, Finnegan
Bradey, Liam & Eve	Klein, Asher	Saker, Bassil
Buhman, Eliza	Kolt, Satchel	Sarakinsky, Atholl
Burg, Candice	Koray & Diana	Seymour, Damien Luke
Caldwell, Reg	Kotsohilis, Styliani	Sfikas, John
Carter, Ian & Liz	Kramer, Dan	Shand, Kathy
Coleman, Michael	Krish, Ganesh	Sher, Steven
Cooper, Stella	Kucukalic, Harris	Smaller, Joachim
Coppola, Steve	Lacey, Michael	Stein, Jessie
Corran, Xavier	Lirantzis, Geordan & Best, James	Stern, Barbara
Couch, Claire	Lunn, Suzanne	Tabbah, Ali
Crawford, Margaret	Mathew	Telfer, Sam
Dark, Geoff	May, Julia	Thickpenny, Paul
Dimitroviska, Zlatko & Arena	Milligan, Bill	Thompson, Ruth
Du, Jenny	Mortleman, Gordon	Thorn, Shylah Marie
Ellevsen, Lucas	Moses, Felix	Tiley, Christopher & Zoe
Evangelista, Joseph	Moses, Hugo	Toms, Matthew
Fainganuku, Elizabeth	Nakkaew, Chutimon	Tzortizis, Tiana & P
Feiglen, Adina	Neill, Steven & Adele	Warwick-Rose, James
Frank, Kira Lee	Newstadt, Dina	Watkins, Therese
Hakim, Sarah	O'Brien, Isobel	Winton, Zara
Hannan, Daisy	O'Reilly, Dara	Zipser, Daniel
Harris, Lauren & Jeffery	Orpilla, Gracie	
Henry, Courtney	Pacey, Jenny	
Heralt, Oscar	Papantoniou, Christian	
Hill, Iris	Park, Jae Min	
Hirschson, Annette	Philp, Hendy	
Jaffee, Dylan	Porter, Islay & Daisy	
Jowell, Donn	Potash, Aaron	
Kaplan, Claudia	Rapke, Elyad Lev	
Kaplan, Elliana	Rawlings, Lynne	
Karoubas, Mia		

IN MEMORIAM

Gifts made in memory of someone special who has passed away make a significant difference to the lives of sick and injured children. Thank you to everyone who gave in memory of a loved one last year. To find out about our In Memoriam Program, please call (02) 9382 1188 or email inmemoriam@schf.org.au

Abbott, Isabelle	Leitch, Rhonda	Turnbull, Tess
Adair, Taj	McGregor, Lachlan	Ward, Zara
Airey, Mitchel	McLellan, James	Williams, Rosemary
Akayan, Callum	McSullea, Molly	Zerk, Maurice
Andrews, Hamish	Moore, David	Zolotas, Steve
Barkway, Hugo	Murdoch, Jayne	
Blencke, Harry	Orlando, Paula	
Bradshaw, Arielle	Palonis, Sylvia	
Brown, Marie	Panauiotou, Nick	
Clark, Graham	Piltz, Damien	
Clayton, Jessie	Poggi, Anthony	
Dive, Aurora	Poredos, Maria	
Doumanis, Nicholas	Rutherford, Ruth	
D'Silva, Dunbar	Sachdeva, Ramnath	
Ellevsen, Lucas	Scharkie, Jackie	
Ferguson, Will	Shelmerdine, Frederick	
Florio, Rosa	Silvio, Anna	
Greenway, Bill	Slater, John	
Haralamous, George	Sophie	
Harvey, Benjamin	Tahtouh, Samia	
Holben, Colin	Theodore, Cynthia	
Houghton, Scott	Tillack, Sophie	
Hush, Joshua	Tipaldo, Robert	
Kashani, Nassim	Topham, Rhett	



BEQUESTS

Sydney Children's Hospital Foundation is privileged to have received the following bequests this year. Thank you. If you would like to find out how you can leave a gift in your Will to help save the lives of children at Sydney Children's Hospital, please call (02) 9382 1188 or email legacy@schf.org.au

Estate of the Late Beryl Anderson
 Estate of the Late Charles Ross Adamson
 Estate of the Late Hazel Belle Godwin
 Estate of the Late Henry William Lawrence
 Estate of the Late Iris Robbins Simpson
 Estate of the Late Mary Eleanor Gordon
 Estate of the Late Michael Francis Larkin
 Estate of the Late Michael Raymond Moody
 Estate of the Late Murial Olga Brereton
 Estate of the Late Robert Hayes
 Estate of the Late Ronald Bolton
 Estate of the Late Ruth Maude Guthrie
 Estate of the Late Thomas Thomson
 Estate of the Late Warren Douglas Morphett
 Estate of the Late William George Wilson Magill

INDEPENDENT AUDITOR'S REPORT

REPORT ON THE FINANCIAL STATEMENTS

We have audited the abridged financial statements, comprising the statement of financial position as at 30 June 2012, the statement of comprehensive income, statement of cash flows for the year then ended, and related notes, derived from the audited financial statements of Sydney Children's Hospital Foundation for the financial year ended 30 June 2012. The abridged financial statements do not contain all the disclosures required by the Australian Accounting Standards and accordingly, reading the abridged financial statements is not a substitute for reading the audited financial statements.

TRUSTEES' RESPONSIBILITY FOR THE FINANCIAL STATEMENTS

The trustees of the Foundation are responsible for the preparation and fair presentation of the abridged financial statements in accordance with Australian Accounting Standards (including the Australian Accounting Interpretations) and the trust deed and for such internal control as the trustees determine is necessary to enable the preparation of the abridged financial statements that are free from material misstatement, whether due to fraud or error.

AUDITOR'S RESPONSIBILITY

Our responsibility is to express an opinion on the abridged financial statements based on our audit. We conducted our audit in accordance with Australian Auditing Standards. These Auditing Standards require that we comply with relevant ethical requirements relating to audit engagements and plan and perform the audit to obtain reasonable assurance whether the abridged financial statements are free from material misstatement. An audit involves performing procedures to obtain audit evidence about the amounts and disclosures in the abridged financial statements. The procedures selected depend on the auditor's judgement, including the assessment of the risks of material misstatement of the abridged financial statements, whether due to fraud or error. In making those risk assessments, the auditor considers internal control relevant to the Foundation's preparation and fair presentation of the abridged financial statements in order to design audit procedures that are appropriate in the circumstances, but not for the purpose of expressing an opinion on the effectiveness of the Foundation's internal control. An audit also includes evaluating the appropriateness of accounting policies used and the reasonableness of accounting estimates made by the directors, as well as evaluating the overall presentation of the abridged financial statements. We believe that the audit evidence we have obtained is sufficient and appropriate to provide a basis for our audit opinion.

INDEPENDENCE

In conducting our audit, we have complied with the independence requirements of Australian professional ethical pronouncements.

AUDIT OPINION

In our opinion, the information reported in the abridged financial statements is consistent with the full annual financial statements from which it is derived and upon which we have expressed our audit opinion. For a better understanding of the scope of our audit, this report should be read in conjunction with our audit report on the full annual financial statements. A copy of this may be obtained from Sydney Children's Hospital Foundation at:

Locked Bag 2005, Randwick NSW 2031.

HILL ROGERS SPENCER STEER ASSURANCE PARTNERS



JOHN R WILCOX
Partner

Dated this 6th day of September 2012



COMMENTARY ON FINANCIAL PERFORMANCE

Financially, the Foundation had another difficult year, with overall fundraising falling short of budget by 8% due mainly to the impact of a fluctuating non-confident financial market.

To compensate for this shortfall, the organisation's costs have been contained resulting in an underspend of 4% on the total expenditure budget.

Overall, the Foundation has achieved a net profit of \$11.1 million, which is satisfactory considering the market conditions.

Accomplishments during the year include:

- Funding the Hospital with over \$6.8 million for ongoing needs.
- Additionally committing \$15 million as the major supporter of the Hospital's Clinical Service Building currently under construction and ensuring that these funds will be able to be provided as required without imposition on reserves.
- Establishing a Risk Management Policy which was endorsed by the Audit & Risk Committee.
- Upgrading the Foundation's Deductible Gift Recipient status which resulted in the expansion of our sources for fundraising and the introduction of salary packaging.
- Protecting the returns on invested funds by moving the investment mix to a more defensive position.

**STATEMENT OF
COMPREHENSIVE
INCOME**
FOR THE YEAR ENDED 30 JUNE 2012

INCOME	2012 \$	2011 \$
Bequests	642,675	1,846,466
Donations and fundraising	10,924,035	9,757,168
Capital appeals	825,983	10,000
Net investment revenue	1,167,276	1,968,061
Gift shop & café operations	1,827,694	1,762,063
Miscellaneous income	7,915	4,686
Rental income	65,000	46,065
TOTAL INCOME	15,460,578	15,394,509
LESS EXPENSES		
Fundraising appeals	845,767	591,605
Gift shop & café operations	1,449,060	1,379,072
Operational	2,015,870	1,991,861
TOTAL EXPENSES	4,310,697	3,962,538
NET SURPLUS FROM ORDINARY ACTIVITIES	11,149,881	11,431,971
OTHER COMPREHENSIVE INCOME:		
Other comprehensive income for the year	-	-
OTHER COMPREHENSIVE INCOME FOR THE YEAR	-	-
TOTAL COMPREHENSIVE INCOME FOR THE YEAR	11,149,881	11,431,971
Add: Capital and reserves brought forward	35,500,462	30,885,406
Less: Grants distributed/distributable	(6,886,247)	(6,816,915)
TOTAL EQUITY / FOUNDATION FUNDS	39,764,096	35,500,462

**STATEMENT OF
FINANCIAL POSITION**
FOR THE YEAR ENDED 30 JUNE 2012

ASSETS	2012 \$	2011 \$
CURRENT ASSETS		
Cash and cash equivalents	4,420,895	8,540,231
Trade and other receivables	1,035,648	470,871
Inventories	52,766	44,241
Financial assets	11,500,000	3,600,329
TOTAL CURRENT ASSETS	17,009,309	12,655,672
NON-CURRENT ASSETS		
Financial assets	19,499,954	19,291,723
Property, plant and equipment	2,782,669	2,779,443
Investment property	1,220,737	1,238,117
TOTAL NON-CURRENT ASSETS	23,503,360	23,309,283
TOTAL ASSETS	40,512,669	35,964,955
LIABILITIES		
CURRENT LIABILITIES		
Trade and other payables	563,686	305,319
Short-term provisions	127,576	104,047
Other current liabilities	3,012	1,150
TOTAL CURRENT LIABILITIES	694,274	410,516
NON-CURRENT LIABILITIES		
Long-term provisions	54,299	53,977
TOTAL NON-CURRENT LIABILITIES	54,299	53,977
TOTAL LIABILITIES	748,573	464,493
NET ASSETS	39,764,096	35,500,462
EQUITY		
Settlement capital	100	100
Revaluation reserve	766,324	766,324
Reserves	38,997,672	34,734,038
TOTAL EQUITY	39,764,096	35,500,462

STATEMENT OF CASH FLOWS

FOR THE YEAR ENDED 30 JUNE 2012

CASH FROM OPERATING ACTIVITIES	2012	2011
	\$	\$
Bequests and donations received	11,967,470	11,665,535
Receipts from cafe and gift shop customers	1,836,431	1,746,928
Payments to suppliers and employees	(4,138,705)	(3,989,662)
Interest received	761,426	371,953
Contributions paid	(6,886,247)	(6,816,915)
NET CASH PROVIDED BY OPERATING ACTIVITIES	3,540,375	2,977,839
CASH FLOWS FROM INVESTING ACTIVITIES		
Purchase of investment property	-	(1,245,628)
Purchase of property, plant and equipment	(66,305)	(12,741)
Net movement in investments	(7,593,406)	422,000
NET CASH USED BY INVESTING ACTIVITIES	(7,659,711)	(836,369)
Net increase (decrease) in cash and cash equivalents held	(4,119,336)	2,141,470
Cash and cash equivalents at beginning of financial year	8,540,231	6,398,761
CASH AND CASH EQUIVALENTS AT END OF FINANCIAL YEAR	4,420,895	8,540,231

NOTES TO THE FINANCIAL STATEMENTS

FOR THE YEAR ENDED 30 JUNE 2012

1. SURPLUS FROM ORDINARY ACTIVITIES HAS BEEN DETERMINED AFTER:	2012	2011
	\$	\$
A. EXPENSES		
Depreciation and amortisation		
• property, plant and equipment	63,079	59,983
• investment property	17,380	7,511
TOTAL DEPRECIATION AND AMORTISATION	80,459	67,494
B. CREDITING AS INCOME		
Interest	730,975	443,085
Investment income	599,232	1,677,305
Management and brokerage fees	(162,931)	(152,329)
NET INVESTMENT REVENUE	1,167,276	1,968,061
2. RECONCILIATION OF NET SURPLUS TO CASH PROVIDED BY OPERATING ACTIVITIES:		
Net surplus for the year before contributions paid	11,149,881	11,431,971
Less: Contributions paid	(6,886,247)	(6,816,915)
ADD/(SUBTRACT): NON-CASH FLOWS IN SURPLUS FROM ORDINARY ACTIVITIES		
Depreciation	80,459	67,494
Decrease/(increase) in value of managed investment	(514,496)	(1,524,976)
CHANGES IN ASSETS AND LIABILITIES		
(Increase)/decrease in other receivables	(562,915)	(255,149)
Increase/(decrease) in creditors and accruals	258,367	49,223
(Increase)/decrease in inventories	(8,525)	1,210
Increase/(decrease) in employee entitlements	23,851	24,981
	3,540,375	2,977,839

NOTES TO THE FINANCIAL STATEMENTS CONTINUED.

3. ADDITIONAL INFORMATION REQUIRED UNDER THE CHARITABLE FUNDRAISING ACT, 1991		2012	2011
		\$	\$
A. STATEMENT OF INCOME AND EXPENDITURE FOR FUNDRAISING APPEAL:			
Gross income received from donations and fundraising appeals		11,822,933	9,817,919
Expenditure associated with fundraising appeals		845,767	591,605
NET OPERATING SURPLUS		10,977,166	9,226,314
B. COMPARISON OF CERTAIN MONETARY FIGURES AND PERCENTAGES:			
Fundraising Expenditure	845,767		
Gross Fundraising Income	11,822,933	7%	6%
Net Operating Surplus	10,977,166		
Gross Fundraising Income	11,822,933	93%	94%
Contributions Distributed or Distributable	6,886,247		
Total Expenditure	11,196,944	61%	63%
Contributions Distributed or Distributable	6,886,247		
Gross Income	15,460,578	45%	44%

NOTES TO THE FINANCIAL STATEMENTS CONTINUED.

C. APPLICATION OF FUNDS FOR CHARITABLE PURPOSES:		2012	2011
		\$	\$
Surplus from fundraising appeals		10,977,166	9,226,314
Contributions distributed or distributable		6,886,247	6,816,915
Expenditure on administration and indirect costs		2,015,870	1,991,861
TOTAL OPERATING EXPENDITURE		8,902,117	8,808,776
SURPLUS/(DEFICIENCY) TRANSFERRED TO (FROM) RESERVES		2,075,049	417,538

D. FUNDRAISING CONDUCTED JOINTLY WITH TRADERS:

Included in Donations and Fundraising Appeal
Revenue of \$11,822,933 is revenue from fundraising
conducted jointly with traders disclosed as follows:

TOTAL REVENUE	261,282	245,624
----------------------	----------------	----------------

No expenditure was incurred in connection with the above during the year.

THANK YOU

JIMMY POZARIK'S 'SEE WHAT I SEE' A YEAR IN THE LIFE AT SYDNEY CHILDREN'S HOSPITAL

Since January 2012, renowned international photojournalist Jimmy Pozarik has been documenting the incredible everyday moments at the Sydney Children's Hospital as part of his 'Artist in Residence' project. Over the year, Jimmy has comprehensively photographed the outstanding work of our Hospital teams and how they relate to our precious patients and their families. Many of the photographs from his collection are proudly featured this year in our 2012 Annual Report. The 'Year in the Life' project will be completed in December, with a large selection of the best works on display in our Hospital during December and January as the launch of an Australian

wide touring art exhibition for 2013. The Foundation has been most fortunate to be able to work with Jimmy in a volunteer capacity, and to benefit from his expertise and generosity. Jimmy's career spans 40 years of working with the world's leading news organisations including the Associated Press, Time Magazine, Newsweek Magazine, and The New York Times, and he has been published in virtually every major country in the world today. His goal, in his words, is to 'see what I see' - so the general public can begin to understand what it's like to be a patient or relative under the most trying times imaginable - the illness of a child.

SYDNEY CHILDREN'S HOSPITAL FOUNDATION

LOCKED BAG 2005, RANDWICK NSW 2031

T: 02 9382 1188

E: info@schf.org.au

ABN: 72 003 073 185

F: 02 9314 6195

W: www.schf.org.au

CFN: 13211

THIS ANNUAL REPORT WAS MADE POSSIBLE THANKS TO THE GENEROUS SUPPORT OF:



Grain Creative Pty Ltd

www.thegrain.com.au



www.israelsmith.com



www.rostoneprint.com.au



www.igroupaustralia.com.au

JIMMY POZARIK©